
Product Name: LAMP1 Mouse Monoclonal Antibody**Catalog #: AMM82872**

For research use only.

Summary

Description	Mouse monoclonal Antibody
Host	Mouse
Application	WB,IHC,ICC,ELISA,FC
Reactivity	Human, Monkey
Conjugation	Unconjugated
Modification	Unmodified
Isotype	Mouse IgG1
Clonality	Monoclonal
Form	Liquid
Concentration	1mg/ml
Storage	Aliquot and store at -20°C (valid for 12 months). Avoid freeze/thaw cycles.
Shipping	Ice bags
Buffer	Purified antibody in PBS with 0.05% sodium azide
Purification	Affinity Purification

Application

Dilution Ratio	WB 1:500-1:2000,IHC 1:200-1:1000,ICC 1:200-1:1000,ELISA 1:5000-1:20000,FC 1:200-1:400
Molecular Weight	44.9kDa

Antigen Information

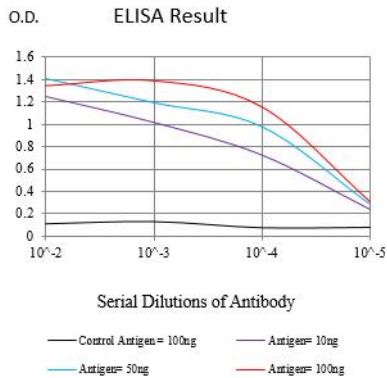
Gene Name	LAMP1
Alternative Names	LAMPA; CD107a; LGP120
Gene ID	3916.0
SwissProt ID	P11279
Immunogen	Purified recombinant fragment of human LAMP1 (AA: 182-414) expressed in E. Coli.

Background

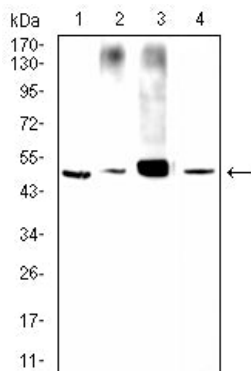
The protein encoded by this gene is a member of a family of membrane glycoproteins. This glycoprotein provides selectins with carbohydrate ligands. It may also play a role in tumor cell metastasis.

Research Area

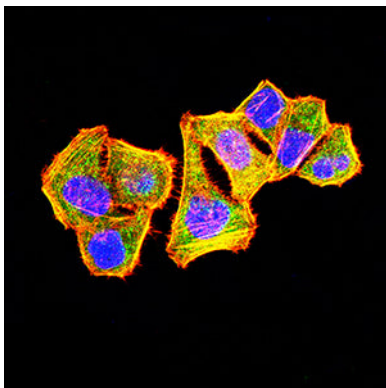
Image Data



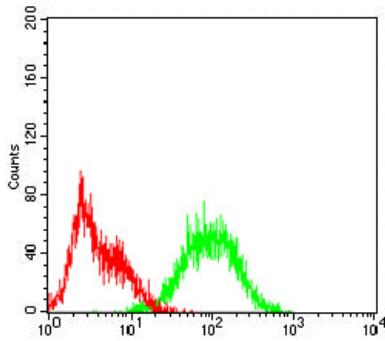
Black line: Control Antigen (100 ng);Purple line: Antigen (10ng); Blue line: Antigen (50 ng); Red line:Antigen (100 ng)



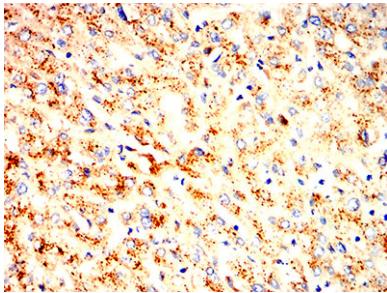
Western blot analysis using LAMP1 mouse mAb against HeLa (1), Ecv304 (2), A431 (3) and MCF-7 (4) cell lysate.



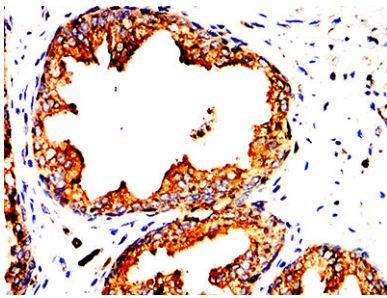
Immunofluorescence analysis of HeLa cells using LAMP1 mouse mAb (green). Blue: DRAQ5 fluorescent DNA dye. Red: Actin filaments have been labeled with Alexa Fluor- 555 phalloidin.



Flow cytometric analysis of Hek293 cells using LAMP1 mouse mAb (green) and negative control (red).



Immunohistochemical analysis of paraffin-embedded human liver tissues using LAMP1 mouse mAb with DAB staining.



Immunohistochemical analysis of paraffin-embedded human prostatic cancer tissues using LAMP1 mouse mAb with DAB staining.