

Summary

Production Name	CD157 Mouse Monoclonal Antibody
Description	Mouse Monoclonal Antibody
Host	Mouse
Application	WB,IHC,FC,ELISA
Reactivity	Human, Mouse, Rat

Performance

Conjugation	Unconjugated
Modification	Unmodified
Isotype	Mouse IgG2b
Clonality	Monoclonal
Form	Liquid
Storage	Store at 4°C short term. Aliquot and store at -20°C long term. Avoid freeze/thaw cycles.
Buffer	Purified antibody in PBS with 0.05% sodium azide
Purification	Affinity Purification

Immunogen

Gene Name	CD157
Alternative Names	BST1
Gene ID	683.0
SwissProt ID	Q10588.Purified recombinant fragment of human CD157 (AA: 82-293) expressed in E. Coli.

Application

Dilution Ratio	WB:1:500-1:2000,IHC:1:200-1:1000,FC:1:200-1:400,ELISA:1:10000
Molecular Weight	35.7kDa

Background

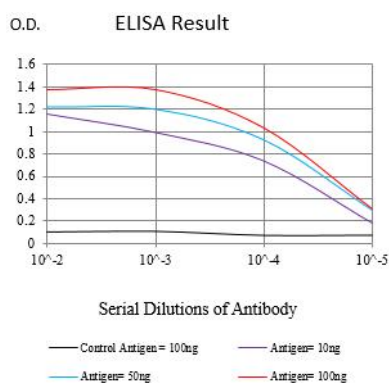
Product Name: CD157 Mouse Monoclonal Antibody
Catalog #: AMM82867



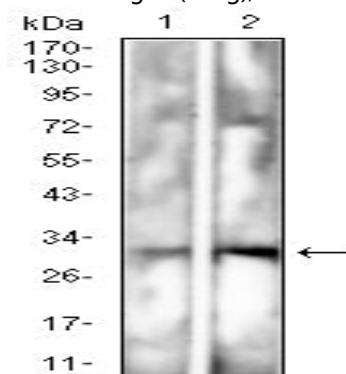
Bone marrow stromal cell antigen-1 is a stromal cell line-derived glycosylphosphatidylinositol-anchored molecule that facilitates pre-B-cell growth. The deduced amino acid sequence exhibits 33% similarity with CD38. BST1 expression is enhanced in bone marrow stromal cell lines derived from patients with rheumatoid arthritis. The polyclonal B-cell abnormalities in rheumatoid arthritis may be, at least in part, attributed to BST1 overexpression in the stromal cell population.

Research Area

Image Data

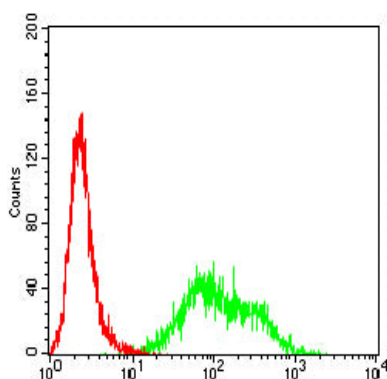


Black line: Control Antigen (100 ng);Purple line: Antigen (10ng); Blue line: Antigen (50 ng); Red line:Antigen (100 ng)

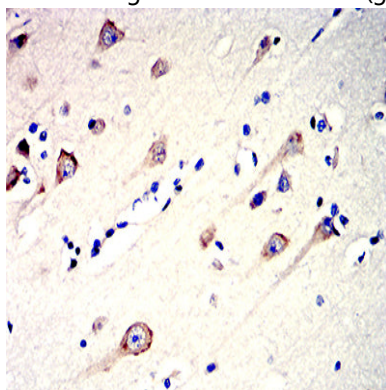


Western blot analysis using CD157 mouse mAb against Rat spleen (1) and Mouse spleen (2) cell lysate.

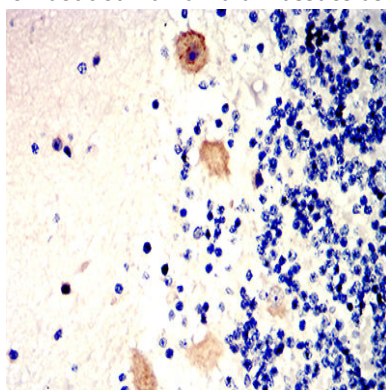
Product Name: CD157 Mouse Monoclonal Antibody
Catalog #: AMM82867



Flow cytometric analysis of HL-60 cells using CD157 mouse mAb (green) and negative control (red).



Immunohistochemical analysis of paraffin-embedded human brain tissues using CD157 mouse mAb with DAB staining.



Immunohistochemical analysis of paraffin-embedded human cerebellum tissues using CD157 mouse mAb with DAB staining.

Note

For research use only.