

**Product Name: SV2C Mouse Monoclonal Antibody**  
**Catalog #: AMM82853**



## Summary

<b>Production Name</b>	SV2C Mouse Monoclonal Antibody
<b>Description</b>	Mouse Monoclonal Antibody
<b>Host</b>	Mouse
<b>Application</b>	IHC,ICC,FC,ELISA
<b>Reactivity</b>	Human

## Performance

<b>Conjugation</b>	Unconjugated
<b>Modification</b>	Unmodified
<b>Isotype</b>	Mouse IgG1
<b>Clonality</b>	Monoclonal
<b>Form</b>	Liquid
<b>Storage</b>	Store at 4°C short term. Aliquot and store at -20°C long term. Avoid freeze/thaw cycles.
<b>Buffer</b>	Purified antibody in PBS with 0.05% sodium azide
<b>Purification</b>	Affinity Purification

## Immunogen

<b>Gene Name</b>	SV2C
<b>Alternative Names</b>	SV2C
<b>Gene ID</b>	22987.0
<b>SwissProt ID</b>	Q496J9.Purified recombinant fragment of human SV2C (AA: extra mix) expressed in E. Coli.

## Application

<b>Dilution Ratio</b>	IHC:1:200-1:1000,ICC:1:200-1:1000,FC:1:200-1:400,ELISA:1:10000
<b>Molecular Weight</b>	82.3KDa

## Background

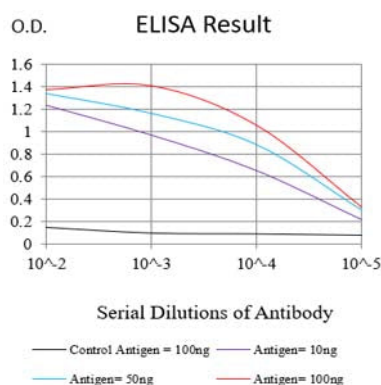
**Product Name: SV2C Mouse Monoclonal Antibody**  
**Catalog #: AMM82853**



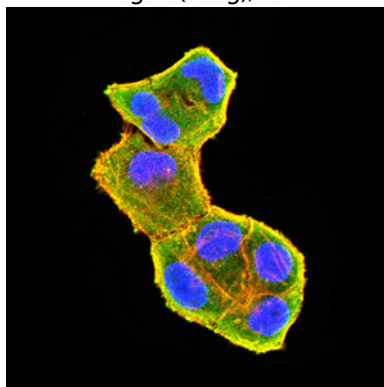
SV2C (Synaptic Vesicle Glycoprotein 2C) is a Protein Coding gene. Diseases associated with SV2C include Foodborne Botulism and Alcohol-Related Birth Defect. Among its related pathways are Toxicity of botulinum toxin type F (BoNT/F) and Uptake and actions of bacterial toxins. Gene Ontology (GO) annotations related to this gene include transporter activity and transmembrane transporter activity. An important paralog of this gene is SV2A.

## Research Area

## Image Data

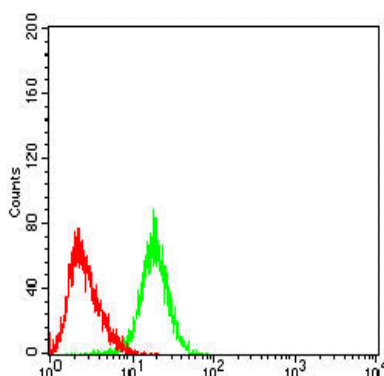


Black line: Control Antigen (100 ng);Purple line: Antigen (10ng); Blue line: Antigen (50 ng); Red line:Antigen (100 ng)

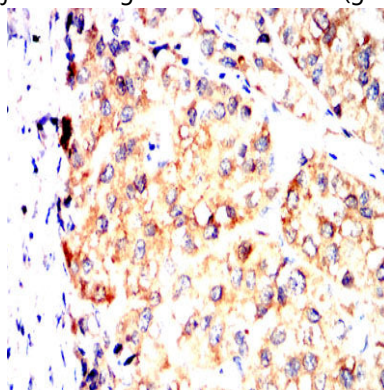


Immunofluorescence analysis of HeLa cells using SV2C mouse mAb (green). Blue: DRAQ5 fluorescent DNA dye. Red: Actin filaments have been labeled with Alexa Fluor- 555 phalloidin. Secondary antibody from Fisher (Cat#: 35503)

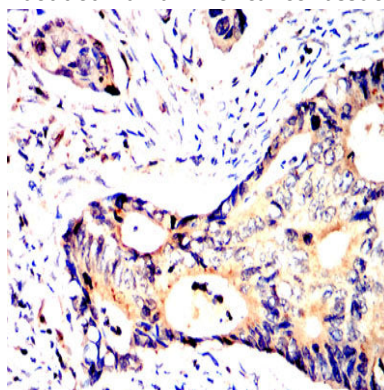
**Product Name: SV2C Mouse Monoclonal Antibody**  
**Catalog #: AMM82853**



Flow cytometric analysis of Raji cells using SV2C mouse mAb (green) and negative control (red).



Immunohistochemical analysis of paraffin-embedded human liver cancer tissues using SV2C mouse mAb with DAB staining.



Immunohistochemical analysis of paraffin-embedded human rectal cancer tissues using SV2C mouse mAb with DAB staining.

## **Note**

For research use only.