
Product Name: CD30 Mouse Monoclonal Antibody**Catalog #: AMM82838**

For research use only.

Summary

Description	Mouse monoclonal Antibody
Host	Mouse
Application	WB,ICC,ELISA,FC
Reactivity	Human, Mouse
Conjugation	Unconjugated
Modification	Unmodified
Isotype	Mouse IgG1
Clonality	Monoclonal
Form	Liquid
Concentration	1mg/ml
Storage	Aliquot and store at -20°C (valid for 12 months). Avoid freeze/thaw cycles.
Shipping	Ice bags
Buffer	Purified antibody in PBS with 0.05% sodium azide
Purification	Affinity Purification

Application

Dilution Ratio	WB 1:500-1:2000,ICC 1:50-1:200,ELISA 1:5000-1:20000,FC 1:200-1:400
Molecular Weight	63.7kDa

Antigen Information

Gene Name	CD30
Alternative Names	Ki-1; D1S166E,TNFRSF8
Gene ID	943.0
SwissProt ID	P28908
Immunogen	Purified recombinant fragment of human CD30 (AA: 416-595) expressed in E. Coli.

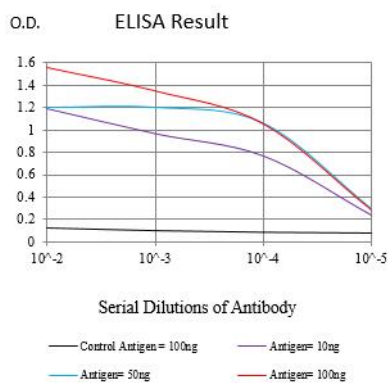
Background

The protein encoded by this gene is a member of the TNF-receptor superfamily. This receptor is expressed by activated, but not by resting, T and B cells. TRAF2 and TRAF5 can interact with this receptor, and mediate the signal transduction that leads to the activation of NF-kappaB. This receptor is a positive regulator of apoptosis, and also has been shown to limit the proliferative

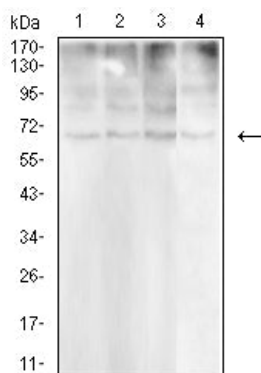
potential of autoreactive CD8 effector T cells and protect the body against autoimmunity. Two alternatively spliced transcript variants of this gene encoding distinct isoforms have been reported.

Research Area

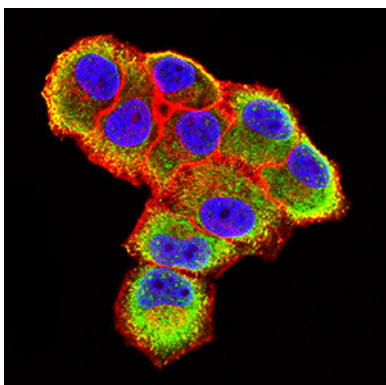
Image Data



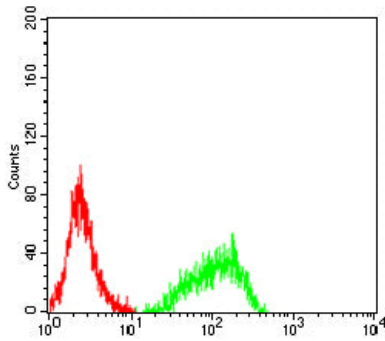
Black line: Control Antigen (100 ng);Purple line: Antigen (10ng); Blue line: Antigen (50 ng); Red line:Antigen (100 ng)



Western blot analysis using CD30 mouse mAb against Helix (1), MCF-7 (2), HCT116 (3),and PC-3 (4)cell lysate.



Immunofluorescence analysis of HeLa cells using CD30 mouse mAb (green). Blue: DRAQ5 fluorescent DNA dye. Red: Actin filaments have been labeled with Alexa Fluor- 555 phalloidin.



Flow cytometric analysis of Jurkat cells using CD30 mouse mAb (green) and negative control (red).