
Product Name: EDN1 Mouse Monoclonal Antibody**Catalog #: AMM82831**

For research use only.

Summary

Description	Mouse monoclonal Antibody
Host	Mouse
Application	ICC,ELISA,FC
Reactivity	Human, Mouse
Conjugation	Unconjugated
Modification	Unmodified
Isotype	Mouse IgG2a
Clonality	Monoclonal
Form	Liquid
Concentration	1mg/ml
Storage	Aliquot and store at -20°C (valid for 12 months). Avoid freeze/thaw cycles.
Shipping	Ice bags
Buffer	Purified antibody in PBS with 0.05% sodium azide
Purification	Affinity Purification

Application

Dilution Ratio	ICC 1:200-1:1000,ELISA 1:5000-1:20000,FC 1:200-1:400
Molecular Weight	24.4KDa

Antigen Information

Gene Name	EDN1
Alternative Names	ET1; QME; PPET1; ARCND3; HDLCQ7
Gene ID	1906.0
SwissProt ID	P05305
Immunogen	Purified recombinant fragment of human EDN1 (AA: 18-212) expressed in E. Coli.

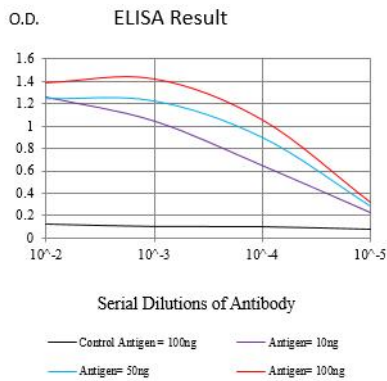
Background

This gene encodes a preproprotein that is proteolytically processed to generate a secreted peptide that belongs to the endothelin/sarafotoxin family. This peptide is a potent vasoconstrictor and its cognate receptors are therapeutic targets in the treatment of pulmonary arterial hypertension. Aberrant expression of this gene may promote tumorigenesis. Alternative

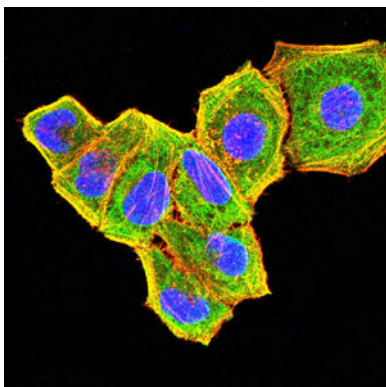
splicing results in multiple transcript variants.

Research Area

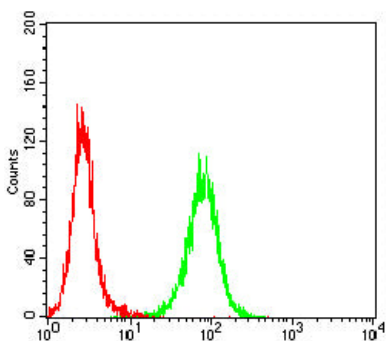
Image Data



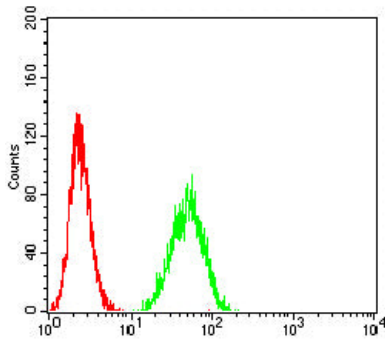
Black line: Control Antigen (100 ng);Purple line: Antigen (10ng); Blue line: Antigen (50 ng); Red line:Antigen (100 ng)



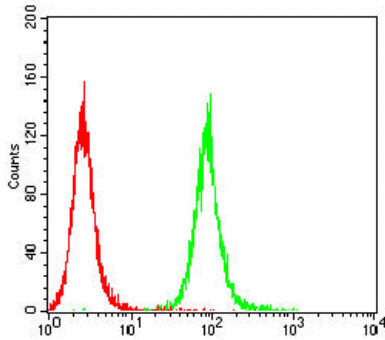
Immunofluorescence analysis of HeLa cells using EDN1 mouse mAb (green). Blue: DRAQ5 fluorescent DNA dye. Red: Actin filaments have been labeled with Alexa Fluor- 555 phalloidin.



Flow cytometric analysis of HeLa cells using EDN1 mouse mAb (green) and negative control (red).



Flow cytometric analysis of HepG2 cells using EDN1 mouse mAb (green) and negative control (red).



Flow cytometric analysis of NIH3T3 cells using EDN1 mouse mAb (green) and negative control (red).