

Summary

Production Name	ITGA1 Mouse Monoclonal Antibody
Description	Mouse Monoclonal Antibody
Host	Mouse
Application	IHC,FC,ELISA
Reactivity	Human

Performance

Conjugation	Unconjugated
Modification	Unmodified
Isotype	Mouse IgG1
Clonality	Monoclonal
Form	Liquid
Storage	Store at 4°C short term. Aliquot and store at -20°C long term. Avoid freeze/thaw cycles.
Buffer	Purified antibody in PBS with 0.05% sodium azide
Purification	Affinity Purification

Immunogen

Gene Name	ITGA1
Alternative Names	VLA1; CD49a
Gene ID	3672.0
SwissProt ID	P56199.Purified recombinant fragment of humanITGA1 (AA: extra(151-364)) expressed in E. Coli.

Application

Dilution Ratio	IHC:1:200-1:1000,FC:1:200-1:400,ELISA:1:10000
Molecular Weight	130.8kDa

Background

Product Name: ITGA1 Mouse Monoclonal Antibody
Catalog #: AMM82797

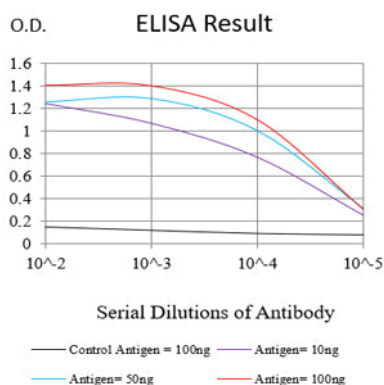


This gene encodes the alpha 1 subunit of integrin receptors. This protein heterodimerizes with the beta 1 subunit to form a cell-surface receptor for collagen and laminin. The heterodimeric receptor is involved in cell-cell adhesion and may play a role in inflammation and fibrosis. The alpha 1 subunit contains an inserted (I) von Willebrand factor type I domain which is thought to be involved in collagen binding. [provided by RefSeq, Jul 2008]

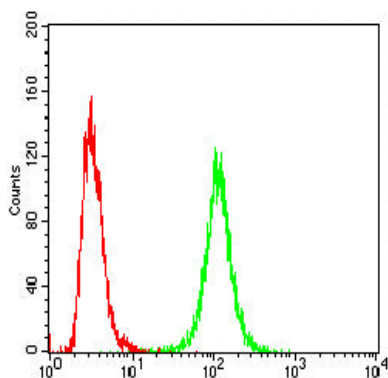
Research Area

PI3K-Akt signaling pathway

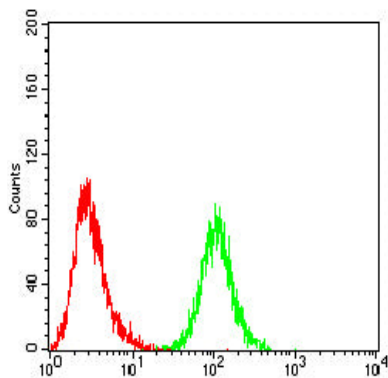
Image Data



Black line: Control Antigen (100 ng);Purple line: Antigen (10ng); Blue line: Antigen (50 ng); Red line:Antigen (100 ng)



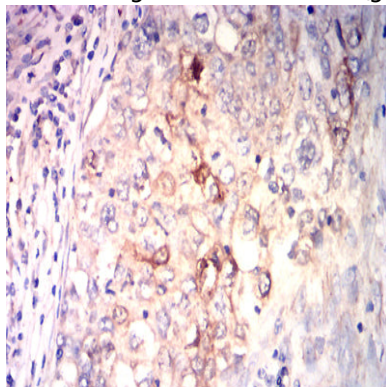
Flow cytometric analysis of Hela cells using ITGA1 mouse mAb (green) and negative control (red).



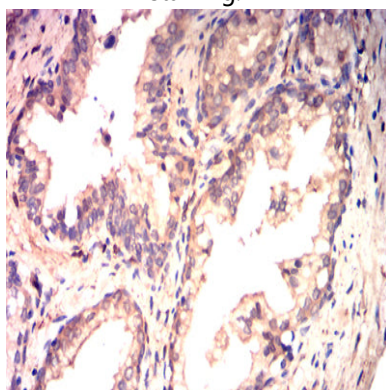
Product Name: ITGA1 Mouse Monoclonal Antibody
Catalog #: AMM82797



Flow cytometric analysis of HrpG2 cells using ITGA1 mouse mAb (green) and negative control (red).



Immunohistochemical analysis of paraffin-embedded human Lung cancer tissues using ITGA1 mouse mAb with DAB staining.



Immunohistochemical analysis of paraffin-embedded human Prostate cancer tissues using ITGA1 mouse mAb with DAB staining.

Note

For research use only.