

---

**Product Name: ETFA Mouse Monoclonal Antibody****Catalog #: AMM82793**

For research use only.

**Summary**

<b>Description</b>	Mouse monoclonal Antibody
<b>Host</b>	Mouse
<b>Application</b>	WB,IHC,ICC,ELISA,FC
<b>Reactivity</b>	Human
<b>Conjugation</b>	Unconjugated
<b>Modification</b>	Unmodified
<b>Isotype</b>	Mouse IgG2a
<b>Clonality</b>	Monoclonal
<b>Form</b>	Liquid
<b>Concentration</b>	1mg/ml
<b>Storage</b>	Aliquot and store at -20°C (valid for 12 months). Avoid freeze/thaw cycles.
<b>Shipping</b>	Ice bags
<b>Buffer</b>	Purified antibody in PBS with 0.05% sodium azide
<b>Purification</b>	Affinity Purification

**Application**

<b>Dilution Ratio</b>	WB 1:500-1:2000,IHC 1:200-1:1000,ICC 1:200-1:1000,ELISA 1:5000-1:20000,FC 1:200-1:400
<b>Molecular Weight</b>	35kDa

**Antigen Information**

<b>Gene Name</b>	ETF A
<b>Alternative Names</b>	EMA; GA2; MADD
<b>Gene ID</b>	2108.0
<b>SwissProt ID</b>	P13804
<b>Immunogen</b>	Purified recombinant fragment of human ETF A (AA: 134-333) expressed in E. Coli.

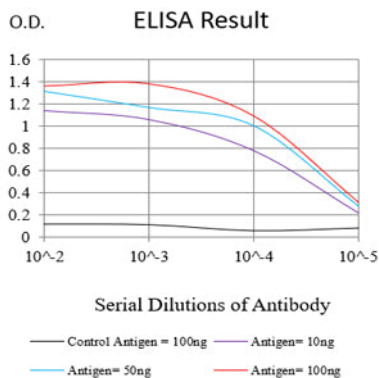
**Background**

ETF A participates in catalyzing the initial step of the mitochondrial fatty acid beta-oxidation. It shuttles electrons between primary flavoprotein dehydrogenases and the membrane-bound electron transfer flavoprotein ubiquinone oxidoreductase. Defects in electron-transfer-flavoprotein have been implicated in type II glutaricaciduria in which multiple acyl-CoA

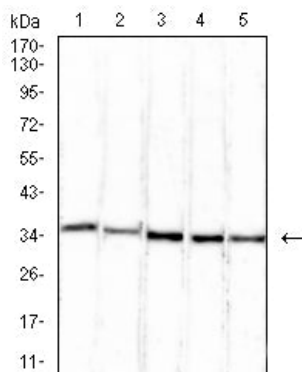
dehydrogenase deficiencies result in large excretion of glutaric, lactic, ethylmalonic, butyric, isobutyric, 2-methyl-butyrlic, and isovaleric acids. Two transcript variants encoding different isoforms have been found for this gene. [provided by RefSeq, Jul 2008]

## Research Area

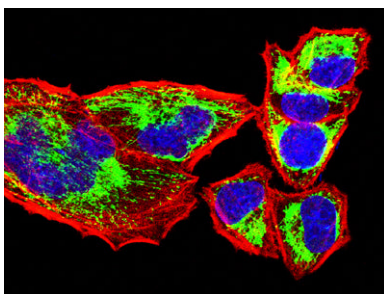
## Image Data



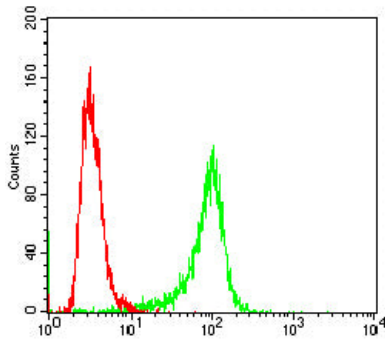
Black line: Control Antigen (100 ng);Purple line: Antigen (10ng); Blue line: Antigen (50 ng); Red line:Antigen (100 ng)



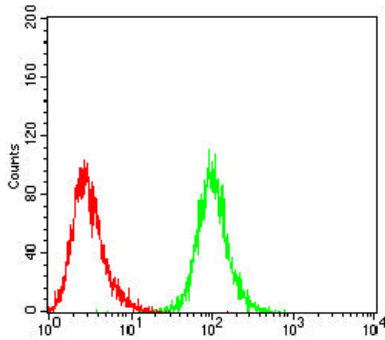
Western blot analysis using ETFA mouse mAb against .HepG2 (1), A431 (2), Hek293 (3),Hela (4)and MCF-7 (5) cell lysate.



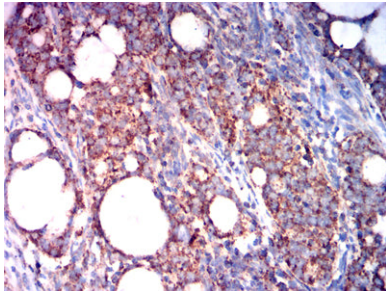
Immunofluorescence analysis of Hela cells using ETFA mouse mAb (green). Blue: DRAQ5 fluorescent DNA dye. Red: Actin filaments have been labeled with Alexa Fluor- 555 phalloidin.



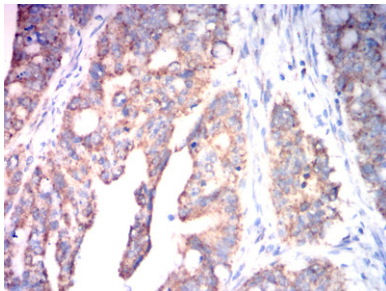
Flow cytometric analysis of HeLa cells using ETFA mouse mAb (green) and negative control (red).



Flow cytometric analysis of HepG2 cells using ETFA mouse mAb (green) and negative control (red).



Immunohistochemical analysis of paraffin-embedded human cervical carcinoma tissues using ETFA mouse mAb with DAB staining.



Immunohistochemical analysis of paraffin-embedded human rectal cancer tissues using ETFA mouse mAb with DAB staining.