

Summary

Production Name	KITLG Mouse Monoclonal Antibody
Description	Mouse Monoclonal Antibody
Host	Mouse
Application	IHC,ICC,FC,ELISA
Reactivity	Human

Performance

Conjugation	Unconjugated
Modification	Unmodified
Isotype	Mouse IgG2b
Clonality	Monoclonal
Form	Liquid
Storage	Store at 4°C short term. Aliquot and store at -20°C long term. Avoid freeze/thaw cycles.
Buffer	Purified antibody in PBS with 0.05% sodium azide
Purification	Affinity Purification

Immunogen

Gene Name	KITLG
Alternative Names	SF; MGF; SCF; SLF; DCUA; FPH2; FPHH; KL-1; Kitl; SHEP7; DFNA69
Gene ID	4254.0
SwissProt ID	P21583.Purified recombinant fragment of human KITLG (AA:Extra(26-214)) expressed in Mammalian.

Application

Dilution Ratio	IHC:1:200-1:1000,ICC:1:200-1:1000,FC:1:200-1:400,ELISA:1:10000
Molecular Weight	30.9kDa

Background

Product Name: KITLG Mouse Monoclonal Antibody
Catalog #: AMM82787

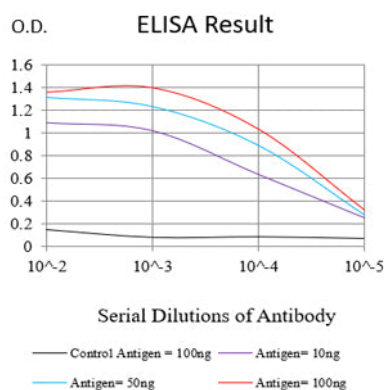


This gene encodes the ligand of the tyrosine-kinase receptor encoded by the KIT locus. This ligand is a pleiotropic factor that acts in utero in germ cell and neural cell development, and hematopoiesis, all believed to reflect a role in cell migration. In adults, it functions pleiotropically, while mostly noted for its continued requirement in hematopoiesis. Two transcript variants encoding different isoforms have been found for this gene. [provided by RefSeq, Jul 2008]

Research Area

TGF-beta signaling pathway, PI3K-Akt signaling pathway

Image Data

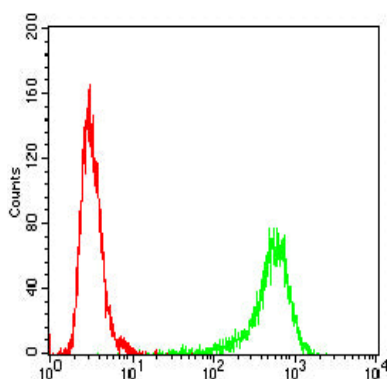


Black line: Control Antigen (100 ng); Purple line: Antigen (10ng); Blue line: Antigen (50 ng); Red line: Antigen (100 ng)

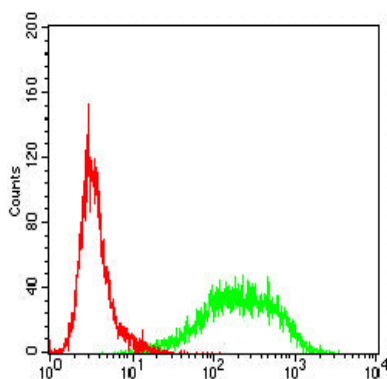


Immunofluorescence analysis of HeLa cells using KITLG mouse mAb (green). Blue: DAPI fluorescent DNA dye. Red: Actin filaments have been labeled with Alexa Fluor- 555 phalloidin. Secondary antibody from Fisher (Cat#: 35503)

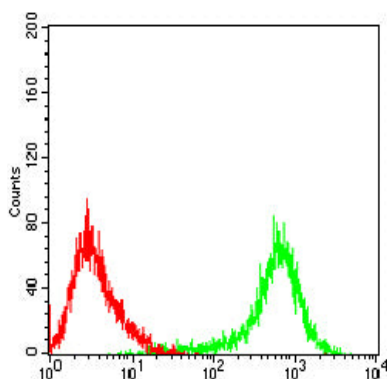
Product Name: KITLG Mouse Monoclonal Antibody
Catalog #: AMM82787



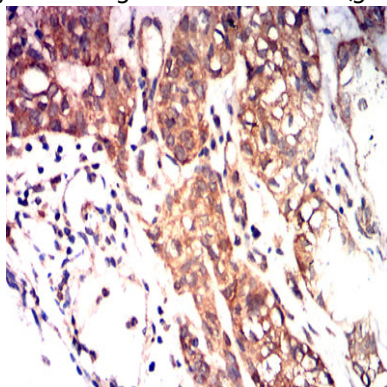
Flow cytometric analysis of Hela cells using KITLG mouse mAb (green) and negative control (red).



Flow cytometric analysis of Jurkat cells using KITLG mouse mAb (green) and negative control (red).



Flow cytometric analysis of Raji cells using KITLG mouse mAb (green) and negative control (red).



Product Name: KITLG Mouse Monoclonal Antibody
Catalog #: AMM82787



Immunohistochemical analysis of paraffin-embedded human Bladder cancer tissues using KITLG mouse mAb with DAB staining.

Note

For research use only.