

**Product Name: CLEC2 Mouse Monoclonal Antibody****Catalog #: AMM82776**

For research use only.

**Summary**

<b>Description</b>	Mouse monoclonal Antibody
<b>Host</b>	Mouse
<b>Application</b>	IHC,ELISA,FC
<b>Reactivity</b>	Human
<b>Conjugation</b>	Unconjugated
<b>Modification</b>	Unmodified
<b>Isotype</b>	Mouse IgG2a
<b>Clonality</b>	Monoclonal
<b>Form</b>	Liquid
<b>Concentration</b>	1mg/ml
<b>Storage</b>	Aliquot and store at -20°C (valid for 12 months). Avoid freeze/thaw cycles.
<b>Shipping</b>	Ice bags
<b>Buffer</b>	Purified antibody in PBS with 0.05% sodium azide
<b>Purification</b>	Affinity Purification

**Application**

<b>Dilution Ratio</b>	IHC 1:200-1:1000,ELISA 1:5000-1:20000,FC 1:200-1:400
<b>Molecular Weight</b>	26.6kDa

**Antigen Information**

<b>Gene Name</b>	CLEC2
<b>Alternative Names</b>	CLEC2; CLEC2B; PRO1384; QDED721; 1810061I13Rik
<b>Gene ID</b>	51266.0
<b>SwissProt ID</b>	Q9P126
<b>Immunogen</b>	Purified recombinant fragment of human CLEC2 (AA: Extra(58-229)) expressed in E. Coli.

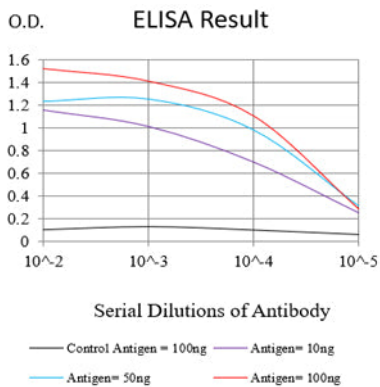
**Background**

Natural killer (NK) cells express multiple calcium-dependent (C-type) lectin-like receptors, such as CD94 (KLRD1; MIM 602894) and NKG2D (KLRC4; MIM 602893), that interact with major histocompatibility complex class I molecules and either inhibit or activate cytotoxicity and cytokine secretion. CLEC2 is a C-type lectin-like receptor expressed in myeloid cells and NK cells

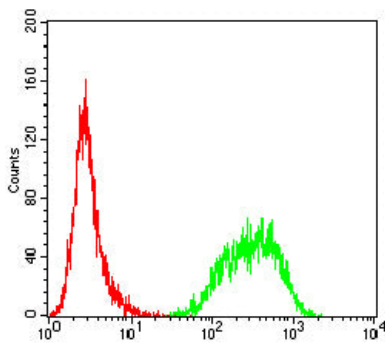
(Colonna et al., 2000 [PubMed 10671229])

## Research Area

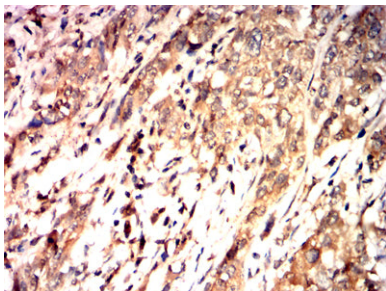
## Image Data



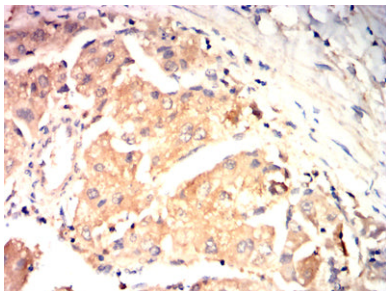
Black line: Control Antigen (100 ng);Purple line: Antigen (10ng); Blue line: Antigen (50 ng); Red line:Antigen (100 ng)



Flow cytometric analysis of Jurkat cells using CLEC2 mouse mAb (green) and negative control (red).



Immunohistochemical analysis of paraffin-embedded human bladder Cancer tissues using CLEC2 mouse mAb with DAB staining.



Immunohistochemical analysis of paraffin-embedded human liver cancer tissues using CLEC2 mouse mAb with DAB staining.