

**Product Name: ALPG Mouse Monoclonal Antibody****Catalog #: AMM82765**

For research use only.

**Summary**

<b>Description</b>	Mouse monoclonal Antibody
<b>Host</b>	Mouse
<b>Application</b>	WB,IHC,ELISA,FC
<b>Reactivity</b>	Human
<b>Conjugation</b>	Unconjugated
<b>Modification</b>	Unmodified
<b>Isotype</b>	Mouse IgG1
<b>Clonality</b>	Monoclonal
<b>Form</b>	Liquid
<b>Concentration</b>	1mg/ml
<b>Storage</b>	Aliquot and store at -20°C (valid for 12 months). Avoid freeze/thaw cycles.
<b>Shipping</b>	Ice bags
<b>Buffer</b>	Purified antibody in PBS with 0.05% sodium azide
<b>Purification</b>	Affinity Purification

**Application**

<b>Dilution Ratio</b>	WB 1:500-1:2000,IHC 1:200-1:1000,ELISA 1:5000-1:20000,FC 1:200-1:400
<b>Molecular Weight</b>	57.3kDa

**Antigen Information**

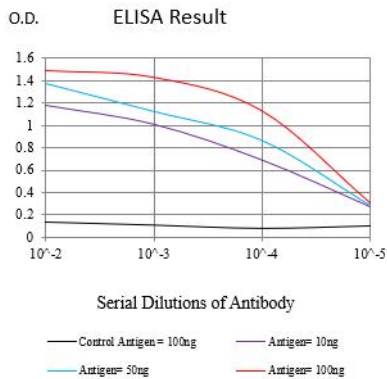
<b>Gene Name</b>	ALPG
<b>Alternative Names</b>	GCAP; ALPPL; ALPPL2
<b>Gene ID</b>	251.0
<b>SwissProt ID</b>	P10696
<b>Immunogen</b>	Purified recombinant fragment of human ALPG (AA: 170-285) expressed in E. Coli.

**Background**

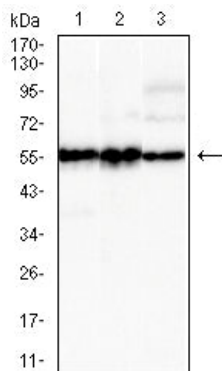
There are at least four distinct but related alkaline phosphatases: intestinal, placental, placental-like, and liver/bone/kidney (tissue non-specific). The product of this gene is a membrane bound glycosylated enzyme, localized to testis, thymus and certain germ cell tumors, that is closely related to both the placental and intestinal forms of alkaline phosphatase.

## Research Area

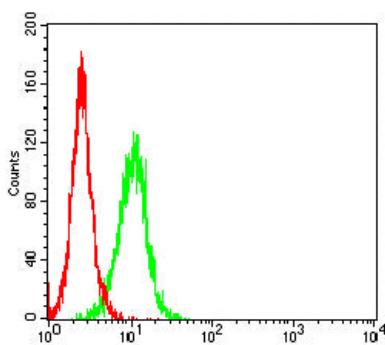
## Image Data



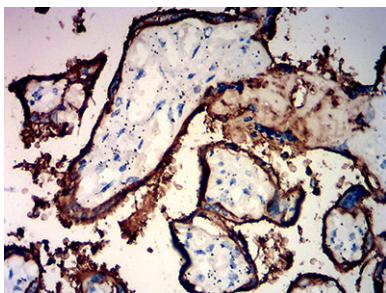
Black line: Control Antigen (100 ng); Purple line: Antigen (10ng); Blue line: Antigen (50 ng); Red line: Antigen (100 ng)



Western blot analysis using ALPG mouse mAb against SK-OV-3 (1), HeLa (2), and LOVO (3) cell lysate.



Flow cytometric analysis of U937 cells using ALPG mouse mAb (green) and negative control (red).



Immunohistochemical analysis of paraffin-embedded human placenta tissues using ALPG mouse mAb with DAB staining.

