

## Summary

|                        |                                 |
|------------------------|---------------------------------|
| <b>Production Name</b> | TUBB1 Mouse Monoclonal Antibody |
| <b>Description</b>     | Mouse Monoclonal Antibody       |
| <b>Host</b>            | Mouse                           |
| <b>Application</b>     | WB,IHC,ICC,FC,ELISA             |
| <b>Reactivity</b>      | Human, Mouse, Monkey            |

## Performance

|                     |  |
|---------------------|--|
| <b>Conjugation</b>  | Unconjugated   |
| <b>Modification</b> | Unmodified   |
| <b>Isotype</b>      | Mouse IgG1   |
| <b>Clonality</b>    | Monoclonal   |
| <b>Form</b>         | Liquid   |
| <b>Storage</b>      | Store at 4°C short term. Aliquot and store at -20°C long term. Avoid freeze/thaw cycles. |
| <b>Buffer</b>       | Purified antibody in PBS with 0.05% sodium azide   |
| <b>Purification</b> | Affinity Purification  |

## Immunogen

|                          |   |
|--------------------------|---|
| <b>Gene Name</b>         | TUBB1   |
| <b>Alternative Names</b> | M40; TUBB1; TUBB5; CDCBM6; CSCSC1; OK/SW-cl.56  |
| <b>Gene ID</b>           | 203068.0  |
| <b>SwissProt ID</b>      | P07437.Purified recombinant fragment of human TUBB1 (AA: 1-444) expressed in E. Coli. |

## Application

|                         |   |
|-------------------------|---|
| <b>Dilution Ratio</b>   | WB:1:1000-1:2000,IHC:1:200-1:1000,ICC:1:200-1:1000,FC:1:200-1:400,ELISA:1:10000 |
| <b>Molecular Weight</b> | 50.3kDa   |

## Background

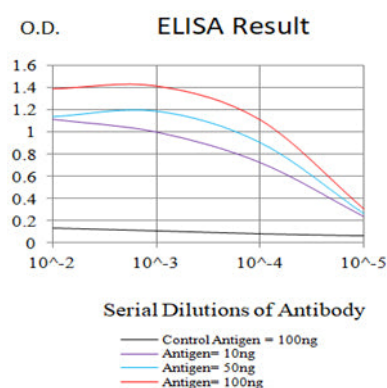
**Product Name: TUBB1 Mouse Monoclonal Antibody**  
**Catalog #: AMM82727**



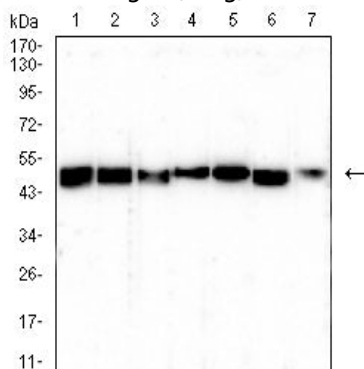
This gene encodes a member of the beta tubulin protein family. Beta tubulins are one of two core protein families (alpha and beta tubulins) that heterodimerize and assemble to form microtubules. This protein is specifically expressed in platelets and megakaryocytes and may be involved in proplatelet production and platelet release. A mutations in this gene is associated with autosomal dominant macrothrombocytopenia. Two pseudogenes of this gene are found on chromosome Y.

## Research Area

## Image Data

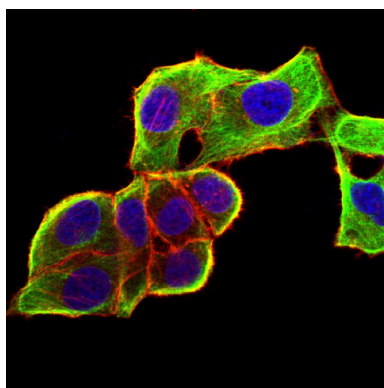


Black line: Control Antigen (100 ng);Purple line: Antigen (10ng); Blue line: Antigen (50 ng); Red line:Antigen (100 ng)

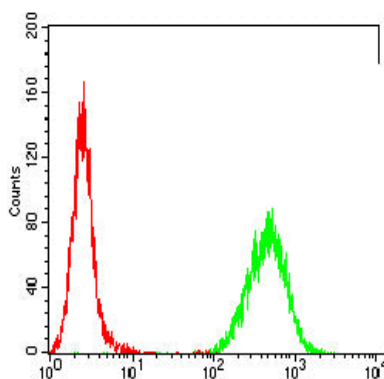


Western blot analysis using TUBB1 mouse mAb against K562 (1), HepG2 (2), A431 (3), Jurkat (4), Hela (5), NIH/3T3 (6), and COS-7 (7) cell lysate.

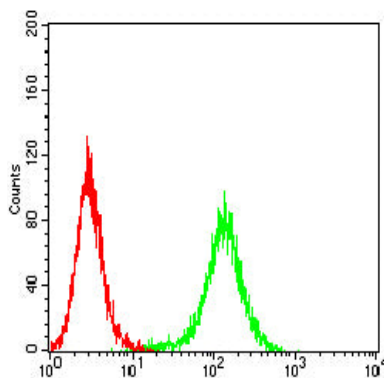
**Product Name: TUBB1 Mouse Monoclonal Antibody**  
**Catalog #: AMM82727**



Immunofluorescence analysis of HeLa cells using TUBB1 mouse mAb (green). Blue: DRAQ5 fluorescent DNA dye. Red: Actin filaments have been labeled with Alexa Fluor- 555 phalloidin. Secondary antibody from Fisher (Cat#: 35503)

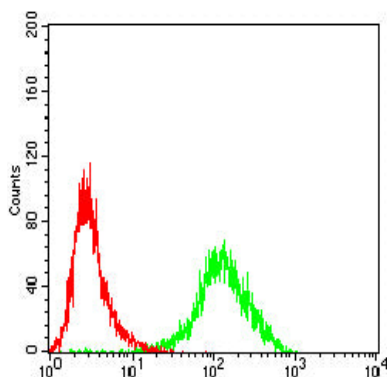


Flow cytometric analysis of HeLa cells using TUBB1 mouse mAb (green) and negative control (red).

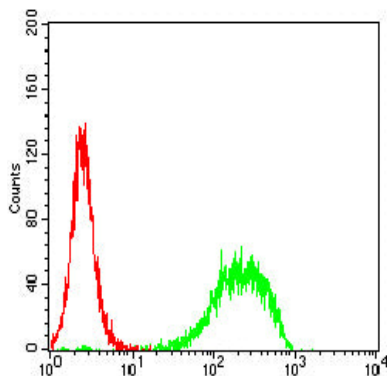


Flow cytometric analysis of HepG2 cells using TUBB1 mouse mAb (green) and negative control (red).

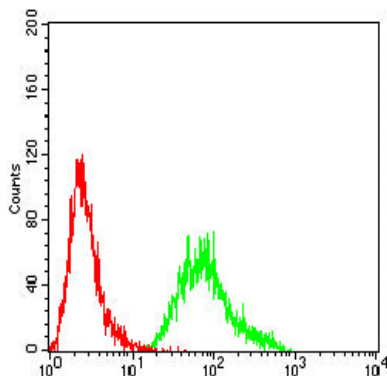
**Product Name: TUBB1 Mouse Monoclonal Antibody**  
**Catalog #: AMM82727**



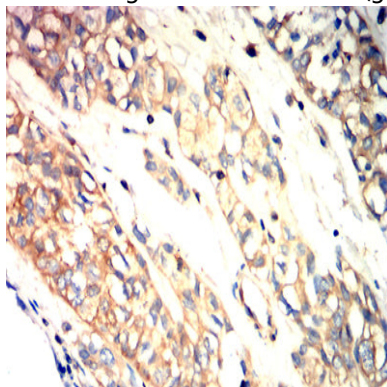
Flow cytometric analysis of HL-60 cells using TUBB1 mouse mAb (green) and negative control (red).



Flow cytometric analysis of Jurkat cells using TUBB1 mouse mAb (green) and negative control (red).



Flow cytometric analysis of THP-1 cells using TUBB1 mouse mAb (green) and negative control (red).



**Product Name: TUBB1 Mouse Monoclonal Antibody**  
**Catalog #: AMM82727**



---

Immunohistochemical analysis of paraffin-embedded human bladder cancer tissues using TUBB1 mouse mAb with DAB staining.

**Note**

For research use only.