
Product Name: GOLGA2 Mouse Monoclonal Antibody**Catalog #: AMM82722**

For research use only.

Summary

Description	Mouse monoclonal Antibody
Host	Mouse
Application	WB,IHC,ICC,ELISA,FC
Reactivity	Human
Conjugation	Unconjugated
Modification	Unmodified
Isotype	Mouse IgG1
Clonality	Monoclonal
Form	Liquid
Concentration	1mg/ml
Storage	Aliquot and store at -20°C (valid for 12 months). Avoid freeze/thaw cycles.
Shipping	Ice bags
Buffer	Purified antibody in PBS with 0.05% sodium azide
Purification	Affinity Purification

Application

Dilution Ratio	WB 1:500-1:2000,IHC 1:200-1:1000,ICC 1:50-1:200,ELISA 1:5000-1:20000,FC 1:200-1:400
Molecular Weight	113kDa

Antigen Information

Gene Name	GOLGA2
Alternative Names	GM130
Gene ID	2801.0
SwissProt ID	Q08379
Immunogen	Purified recombinant fragment of human GOLGA2 (AA: 1-205) expressed in HEK293-6e cells supernatant.

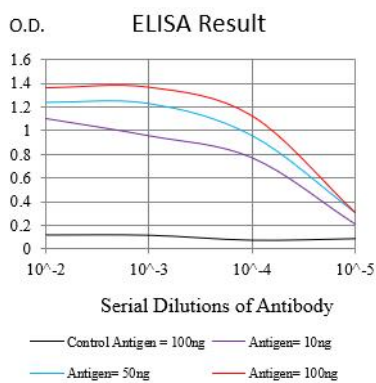
Background

The Golgi apparatus, which participates in glycosylation and transport of proteins and lipids in the secretory pathway, consists of a series of stacked cisternae (flattened membrane sacs). Interactions between the Golgi and microtubules are thought to be

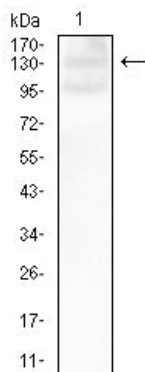
important for the reorganization of the Golgi after it fragments during mitosis. This gene encodes one of the golgins, a family of proteins localized to the Golgi. This encoded protein has been postulated to play roles in the stacking of Golgi cisternae and in vesicular transport. Several alternatively spliced transcript variants of this gene have been described, but the full-length nature of these variants has not been determined.

Research Area

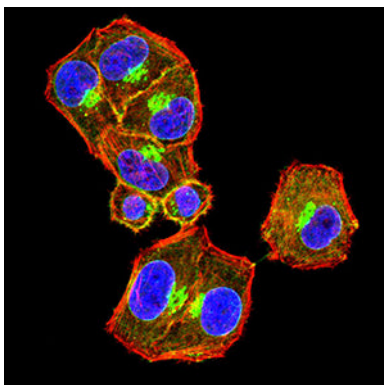
Image Data



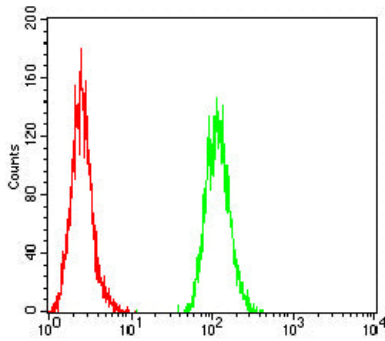
Black line: Control Antigen (100 ng);Purple line: Antigen (10ng); Blue line: Antigen (50 ng); Red line:Antigen (100 ng)



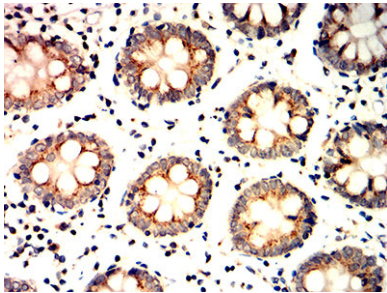
Western blot analysis using GOLGA2 mouse mAb against Jurkat (1) cell lysate.



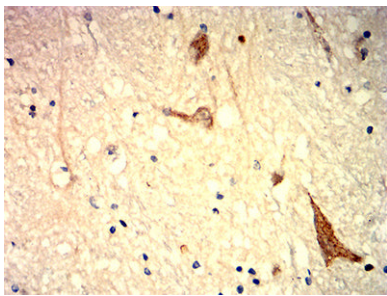
Immunofluorescence analysis of HeLa cells using GOLGA2 mouse mAb (green). Blue: DRAQ5 fluorescent DNA dye. Red: Actin filaments have been labeled with Alexa Fluor- 555 phalloidin.



Flow cytometric analysis of HeLa cells using GOLGA2 mouse mAb (green) and negative control (red).



Immunohistochemical analysis of paraffin-embedded human colon tissues using GOLGA2 mouse mAb with DAB staining.



Immunohistochemical analysis of paraffin-embedded human brain tissues using GOLGA2 mouse mAb with DAB staining.