

**Product Name: CEACAM6 Mouse Monoclonal Antibody****Catalog #: AMM82692**

For research use only.

**Summary**

<b>Description</b>	Mouse monoclonal Antibody
<b>Host</b>	Mouse
<b>Application</b>	IHC, ICC, ELISA, FC
<b>Reactivity</b>	Human
<b>Conjugation</b>	Unconjugated
<b>Modification</b>	Unmodified
<b>Isotype</b>	Mouse IgG1
<b>Clonality</b>	Monoclonal
<b>Form</b>	Liquid
<b>Concentration</b>	1mg/ml
<b>Storage</b>	Aliquot and store at -20°C (valid for 12 months). Avoid freeze/thaw cycles.
<b>Shipping</b>	Ice bags
<b>Buffer</b>	Purified antibody in PBS with 0.05% sodium azide
<b>Purification</b>	Affinity Purification

**Application**

<b>Dilution Ratio</b>	IHC 1:200-1:1000, ICC 1:200-1:1000, ELISA 1:5000-1:20000, FC 1:200-1:400
<b>Molecular Weight</b>	37.2kDa

**Antigen Information**

<b>Gene Name</b>	CEACAM6
<b>Alternative Names</b>	NCA; CEAL; CD66c
<b>Gene ID</b>	4680.0
<b>SwissProt ID</b>	P40199
<b>Immunogen</b>	Purified recombinant fragment of human CEACAM6 (AA: 35-256) expressed in HEK293-6e cells supernatant.

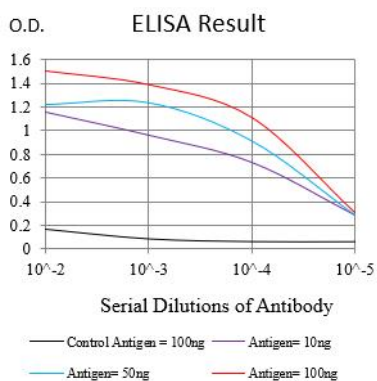
**Background**

This gene encodes a protein that belongs to the carcinoembryonic antigen (CEA) family whose members are glycosyl phosphatidyl inositol (GPI) anchored cell surface glycoproteins. Members of this family play a role in cell adhesion and are

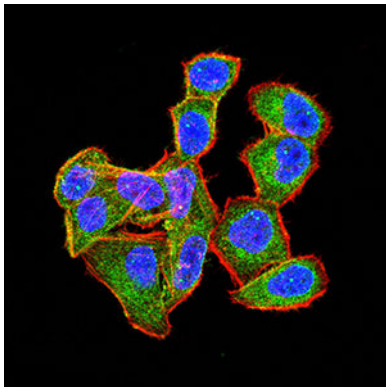
widely used as tumor markers in serum immunoassay determinations of carcinoma. This gene affects the sensitivity of tumor cells to adenovirus infection. The protein encoded by this gene acts as a receptor for adherent-invasive E. coli adhesion to the surface of ileal epithelial cells in patients with Crohn's disease. This gene is clustered with genes and pseudogenes of the cell adhesion molecules subgroup of the CEA family on chromosome 19.

## Research Area

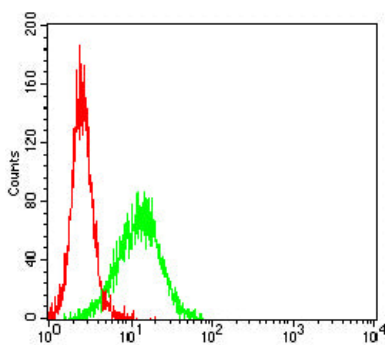
## Image Data



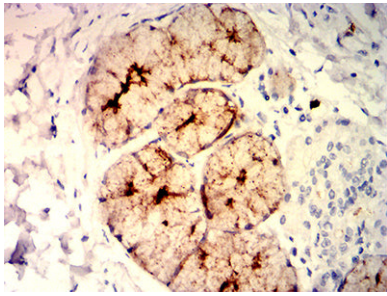
Black line: Control Antigen (100 ng);Purple line: Antigen (10ng); Blue line: Antigen (50 ng); Red line:Antigen (100 ng)



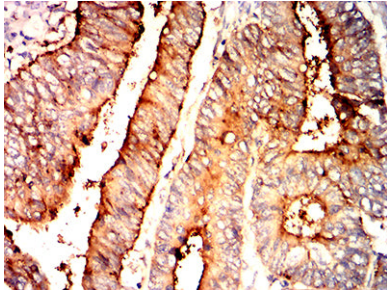
Immunofluorescence analysis of HeLa cells using CEACAM6 mouse mAb (green). Blue: DRAQ5 fluorescent DNA dye. Red: Actin filaments have been labeled with Alexa Fluor-555 phalloidin.



Flow cytometric analysis of Jurkat cells using CEACAM6 mouse mAb (green) and negative control (red).



Immunohistochemical analysis of paraffin-embedded human esophagus tissues using CEACAM6 mouse mAb with DAB staining.



Immunohistochemical analysis of paraffin-embedded human rectum cancer tissues using CEACAM6 mouse mAb with DAB staining.