

Product Name: CDH1 Mouse Monoclonal Antibody
Catalog #: AMM82608



Summary

Production Name	CDH1 Mouse Monoclonal Antibody
Description	Mouse Monoclonal Antibody
Host	Mouse
Application	WB,IHC,FC,ELISA
Reactivity	Human

Performance

Conjugation	Unconjugated
Modification	Unmodified
Isotype	Mouse IgG1
Clonality	Monoclonal
Form	Liquid
Storage	Store at 4°C short term. Aliquot and store at -20°C long term. Avoid freeze/thaw cycles.
Buffer	Purified antibody in PBS with 0.05% sodium azide
Purification	Affinity Purification

Immunogen

Gene Name	CDH1
Alternative Names	UVO; CDHE; ECAD; LCAM; Arc-1; BCDS1; CD324; E-cadherin; E cadherin
Gene ID	999.0
SwissProt ID	P12830.Purified recombinant fragment of human CDH1 (AA:extra(155-354)) expressed in E. Coli.

Application

Dilution Ratio	WB:1:500-1:2000,IHC:1:200-1:1000,FC:1:200-1:400,ELISA:1:10000
Molecular Weight	97.5kDa

Background

Product Name: CDH1 Mouse Monoclonal Antibody
Catalog #: AMM82608

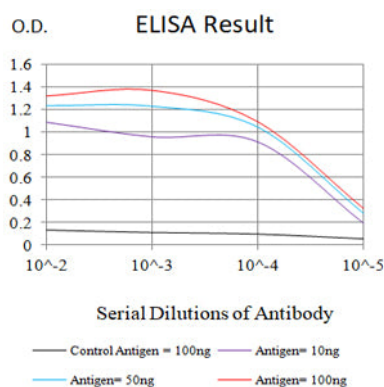


This gene encodes a classical cadherin of the cadherin superfamily. Alternative splicing results in multiple transcript variants, at least one of which encodes a preproprotein that is proteolytically processed to generate the mature glycoprotein. This calcium-dependent cell-cell adhesion protein is comprised of five extracellular cadherin repeats, a transmembrane region and a highly conserved cytoplasmic tail. Mutations in this gene are correlated with gastric, breast, colorectal, thyroid and ovarian cancer. Loss of function of this gene is thought to contribute to cancer progression by increasing proliferation, invasion, and/or metastasis. The ectodomain of this protein mediates bacterial adhesion to mammalian cells and the cytoplasmic domain is required for internalization. This gene is present in a gene cluster with other members of the cadherin family on chromosome 16.

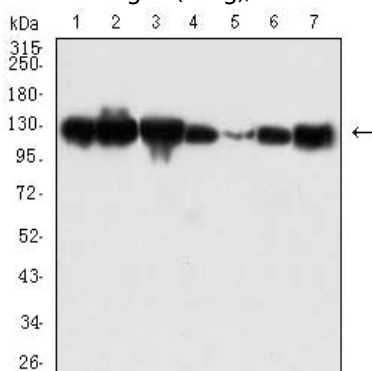
Research Area

TGF-beta signaling pathway

Image Data

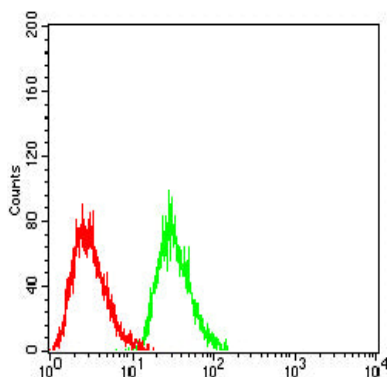


Black line: Control Antigen (100 ng);Purple line: Antigen (10ng); Blue line: Antigen (50 ng); Red line:Antigen (100 ng)

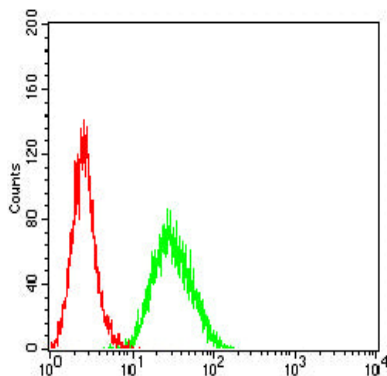


Western blot analysis using CDH1 mouse mAb against A431 (1), LNCap (2), HT-29 (3), PC-3 (4), A549 (5), DU145 (6), and T47D (7) cell lysate.

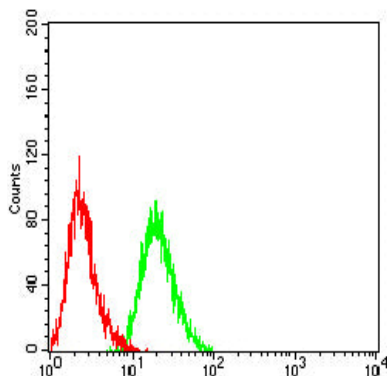
Product Name: CDH1 Mouse Monoclonal Antibody
Catalog #: AMM82608



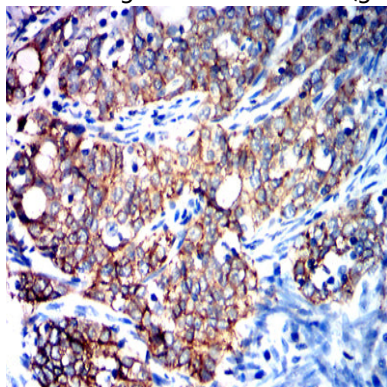
Flow cytometric analysis of HepG2 cells using CDH1 mouse mAb (green) and negative control (red).



Flow cytometric analysis of HT-29 cells using CDH1 mouse mAb (green) and negative control (red).



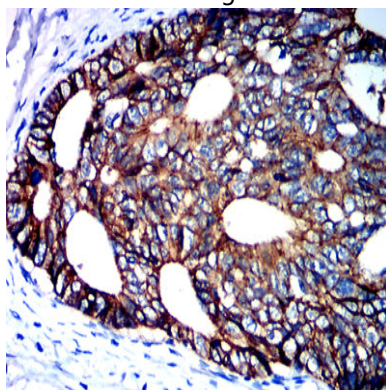
Flow cytometric analysis of Hela cells using CDH1 mouse mAb (green) and negative control (red).



Product Name: CDH1 Mouse Monoclonal Antibody
Catalog #: AMM82608



Immunohistochemical analysis of paraffin-embedded human cervical cancer tissues using CDH1 mouse mAb with DAB staining.



Immunohistochemical analysis of paraffin-embedded human rectal cancer tissues using CDH1 mouse mAb with DAB staining.

Note

For research use only.