

Product Name: CCL27 Mouse Monoclonal Antibody**Catalog #: AMM82597**

For research use only.

Summary

Description	Mouse monoclonal Antibody
Host	Mouse
Application	IHC, ICC, ELISA, FC
Reactivity	Human
Conjugation	Unconjugated
Modification	Unmodified
Isotype	Mouse IgG1
Clonality	Monoclonal
Form	Liquid
Concentration	1mg/ml
Storage	Aliquot and store at -20°C (valid for 12 months). Avoid freeze/thaw cycles.
Shipping	Ice bags
Buffer	Purified antibody in PBS with 0.05% sodium azide
Purification	Affinity Purification

Application

Dilution Ratio	IHC 1:200-1:1000, ICC 1:200-1:1000, ELISA 1:5000-1:20000, FC 1:200-1:400
Molecular Weight	12.6kDa

Antigen Information

Gene Name	CCL27
Alternative Names	ALP; ILC; CTAK; CTACK; PESKY; ESKINE; SCYA27
Gene ID	10850.0
SwissProt ID	Q9Y4X3
Immunogen	Purified recombinant fragment of human CCL27 (AA: 25-112) expressed in E. Coli.

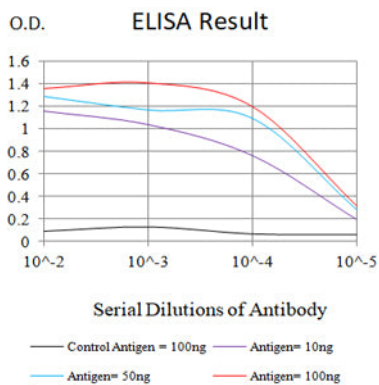
Background

This gene is one of several CC cytokine genes clustered on the p-arm of chromosome 9. Cytokines are a family of secreted proteins involved in immunoregulatory and inflammatory processes. The CC cytokines are proteins characterized by two adjacent cysteines. The protein encoded by this gene is chemotactic for skin-associated memory T lymphocytes. This cytokine

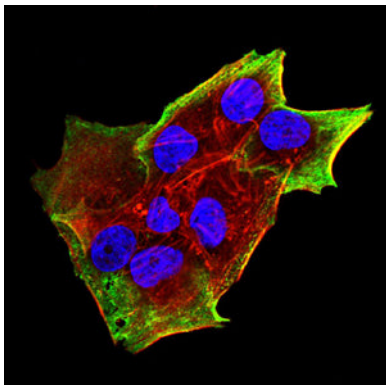
may also play a role in mediating homing of lymphocytes to cutaneous sites. It specifically binds to chemokine receptor 10 (CCR10). Studies of a similar murine protein indicate that these protein-receptor interactions have a pivotal role in T cell-mediated skin inflammation. [provided by RefSeq, Sep 2014]

Research Area

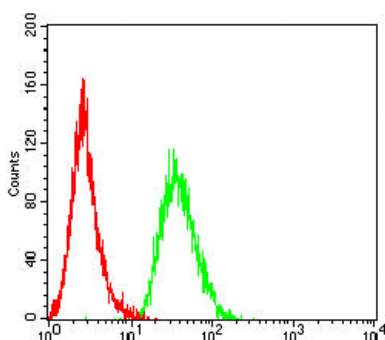
Image Data



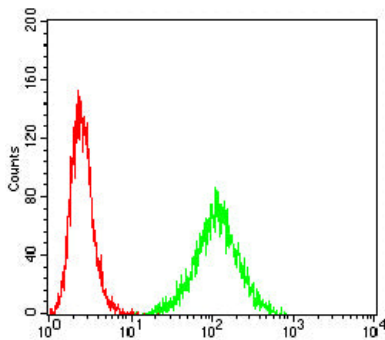
Black line: Control Antigen (100 ng);Purple line: Antigen (10ng); Blue line: Antigen (50 ng); Red line:Antigen (100 ng)



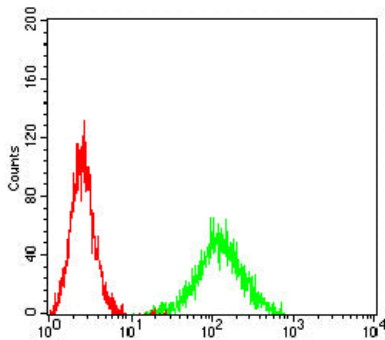
Immunofluorescence analysis of HeLa cells using CCL27 mouse mAb (green). Blue: DRAQ5 fluorescent DNA dye. Red: Actin filaments have been labeled with Alexa Fluor- 555 phalloidin.



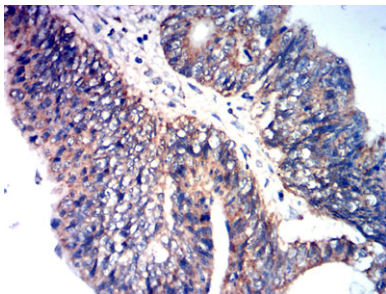
Flow cytometric analysis of HepG2 cells using CCL27 mouse mAb (green) and negative control (red).



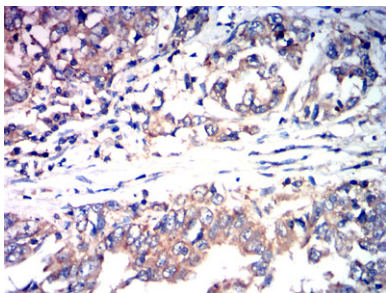
Flow cytometric analysis of HeLa cells using CCL27 mouse mAb (green) and negative control (red).



Flow cytometric analysis of A431 cells using CCL27 mouse mAb (green) and negative control (red).



Immunohistochemical analysis of paraffin-embedded human rectal cancer tissues using CCL27 mouse mAb with DAB staining.



Immunohistochemical analysis of paraffin-embedded human stomach cancer tissues using CCL27 mouse mAb with DAB staining.