

Product Name: NEFL Mouse Monoclonal Antibody
Catalog #: AMM82586



Summary

Production Name	NEFL Mouse Monoclonal Antibody
Description	Mouse Monoclonal Antibody
Host	Mouse
Application	WB,IHC,FC,ELISA
Reactivity	Human,Mouse,Rat,Rabbit

Performance

Conjugation	Unconjugated
Modification	Unmodified
Isotype	Mouse IgG1
Clonality	Monoclonal
Form	Liquid
Storage	Store at 4°C short term. Aliquot and store at -20°C long term. Avoid freeze/thaw cycles.
Buffer	Purified antibody in PBS with 0.05% sodium azide
Purification	Affinity Purification

Immunogen

Gene Name	NEFL
Alternative Names	NFL; NF-L; NF68; CMT1F; CMT2E; CMTDIG; PPP1R110
Gene ID	4747.0
SwissProt ID	P07196.Purified recombinant fragment of human NEFL (AA: 1-200) expressed in E. Coli.

Application

Dilution Ratio	WB:1:500-1:2000,IHC:1:100-1:500,FC:1:200-1:400,ELISA:1:10000
Molecular Weight	61.5kDa

Background

Neurofilaments are type IV intermediate filament heteropolymers composed of light, medium, and heavy chains.

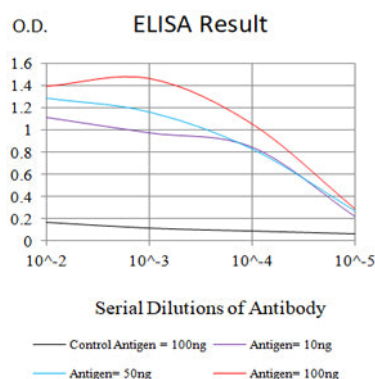
Product Name: NEFL Mouse Monoclonal Antibody
Catalog #: AMM82586



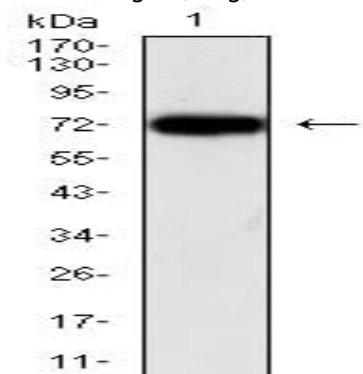
Neurofilaments comprise the axoskeleton and they functionally maintain the neuronal caliber. They may also play a role in intracellular transport to axons and dendrites. This gene encodes the light chain neurofilament protein. Mutations in this gene cause Charcot-Marie-Tooth disease types 1F (CMT1F) and 2E (CMT2E), disorders of the peripheral nervous system that are characterized by distinct neuropathies. A pseudogene has been identified on chromosome Y. [provided by RefSeq, Oct 2008]

Research Area

Image Data

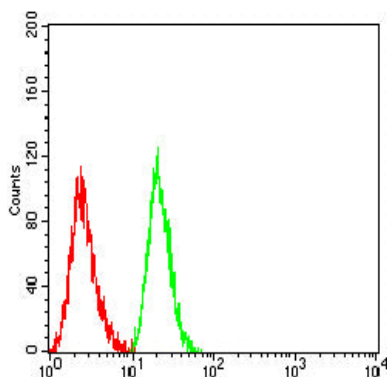


Black line: Control Antigen (100 ng);Purple line: Antigen (10ng); Blue line: Antigen (50 ng); Red line:Antigen (100 ng)

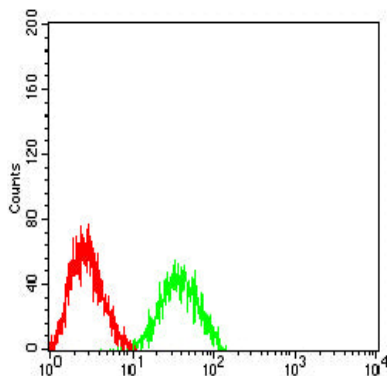


Western blot analysis using NEFL mouse mAb against HEK293 (1) cell lysate.

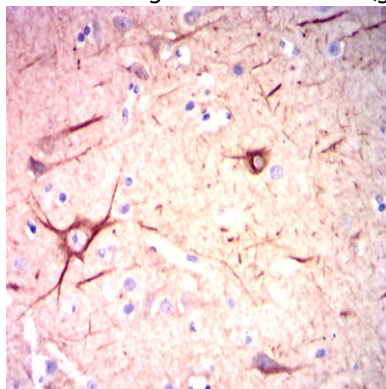
Product Name: NEFL Mouse Monoclonal Antibody
Catalog #: AMM82586



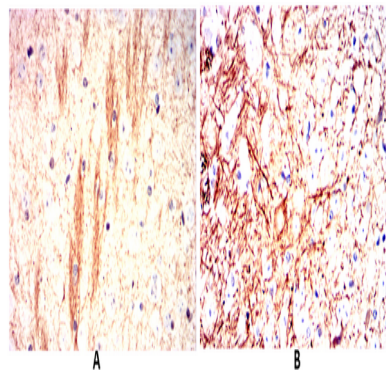
Flow cytometric analysis of Jurkat cells using NEFL mouse mAb (green) and negative control (red).



Flow cytometric analysis of SK-N-SH cells using NEFL mouse mAb (green) and negative control (red).



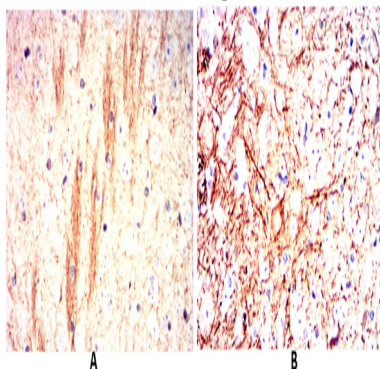
Immunohistochemical analysis of paraffin-embedded human brain tissues using NEFL mouse mAb with DAB staining.



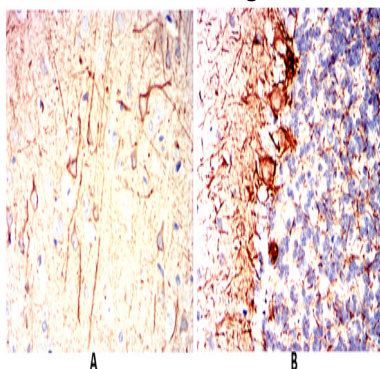
Product Name: NEFL Mouse Monoclonal Antibody
Catalog #: AMM82586



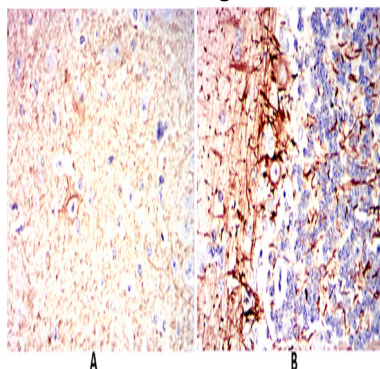
Immunohistochemical analysis of paraffin-embedded human esophageal cancer tissues using NEFL mouse mAb with DAB staining.



Immunohistochemical analysis of paraffin-embedded Mouse brain(A) Mouse cerebellum(B) using NEFL mouse mAb with DAB staining.



Immunohistochemical analysis of paraffin-embedded Rat brain(A) Rat cerebellum(B) using NEFL mouse mAb with DAB staining.



Immunohistochemical analysis of paraffin-embedded Rabbit brain(A) Rabbit cerebellum(B) using NEFL mouse mAb with DAB staining.

Product Name: NEFL Mouse Monoclonal Antibody
Catalog #: AMM82586



Note

For research use only.