

---

**Product Name: G6D Mouse Monoclonal Antibody****Catalog #: AMM82584**

For research use only.

**Summary**

<b>Description</b>	Mouse monoclonal Antibody
<b>Host</b>	Mouse
<b>Application</b>	WB,ICC,ELISA,FC
<b>Reactivity</b>	Human, Mouse, Rat, Monkey
<b>Conjugation</b>	Unconjugated
<b>Modification</b>	Unmodified
<b>Isotype</b>	Mouse IgG1
<b>Clonality</b>	Monoclonal
<b>Form</b>	Liquid
<b>Concentration</b>	1mg/ml
<b>Storage</b>	Aliquot and store at -20°C (valid for 12 months). Avoid freeze/thaw cycles.
<b>Shipping</b>	Ice bags
<b>Buffer</b>	Purified antibody in PBS with 0.05% sodium azide
<b>Purification</b>	Affinity Purification

**Application**

<b>Dilution Ratio</b>	WB 1:500-1:2000,ICC 1:200-1:1000,ELISA 1:5000-1:20000,FC 1:200-1:400
<b>Molecular Weight</b>	13.7kDa

**Antigen Information**

<b>Gene Name</b>	G6D
<b>Alternative Names</b>	LY6G6D; NG25; LY6-D; MEGT1; C6orf23
<b>Gene ID</b>	58530.0
<b>SwissProt ID</b>	O95868
<b>Immunogen</b>	Purified recombinant fragment of human G6D (AA: 20-104) expressed in E. Coli.

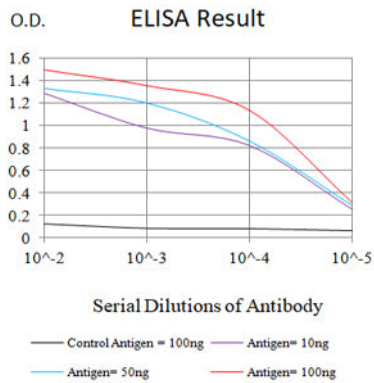
**Background**

LY6G6D belongs to a cluster of leukocyte antigen-6 (LY6) genes located in the major histocompatibility complex (MHC) class III region on chromosome 6. Members of the LY6 superfamily typically contain 70 to 80 amino acids, including 8 to 10 cysteines. Most LY6 proteins are attached to the cell surface by a glycosylphosphatidylinositol (GPI) anchor that is directly involved in

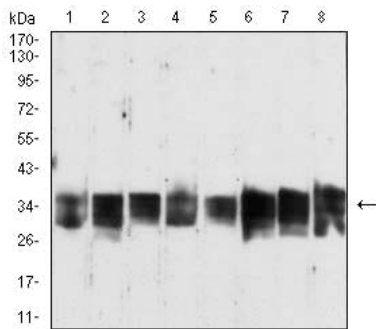
signal transduction (Mallya et al., 2002 [PubMed 12079290]).[supplied by OMIM, Apr 2009]

## Research Area

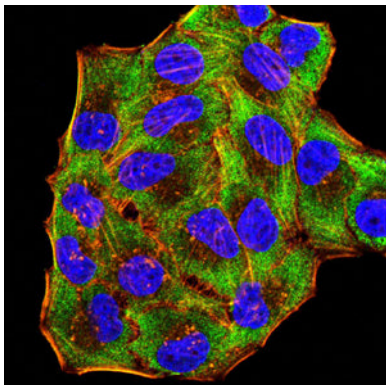
## Image Data



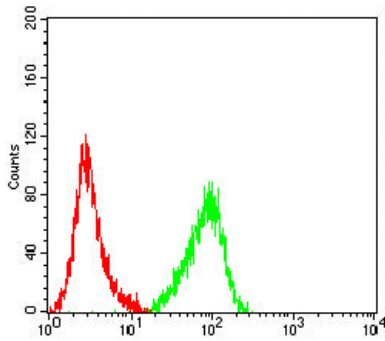
Black line: Control Antigen (100 ng);Purple line: Antigen (10ng); Blue line: Antigen (50 ng); Red line:Antigen (100 ng)



Western blot analysis using G6D mouse mAb against Jurkat (1), MCF-7 (2), A549 (3),K562 (4),Hela (5),C6 (6),COS-7 (7),and NIH/3T3 (8) cell lysate.



Immunofluorescence analysis of HeLa cells using G6D mouse mAb (green). Blue: DRAQ5 fluorescent DNA dye. Red: Actin filaments have been labeled with Alexa Fluor- 555 phalloidin.



Flow cytometric analysis of Jurkat cells using G6D mouse mAb (green) and negative control (red).