

Summary

Production Name	EPCAM Mouse Monoclonal Antibody
Description	Mouse Monoclonal Antibody
Host	Mouse
Application	WB,IHC,FC,ELISA
Reactivity	Human,Mouse,Rat,Monkey

Performance

Conjugation	Unconjugated
Modification	Unmodified
Isotype	Mouse IgG2a
Clonality	Monoclonal
Form	Liquid
Storage	Store at 4°C short term. Aliquot and store at -20°C long term. Avoid freeze/thaw cycles.
Buffer	Purified antibody in PBS with 0.05% sodium azide
Purification	Affinity Purification

Immunogen

Gene Name	EPCAM
Alternative Names	ESA; KSA; M4S1; MK-1; DIAR5; EGP-2; EGP40; KS1/4; MIC18; TROP1; EGP314; HNPCC8; TACSTD1
Gene ID	4072.0
SwissProt ID	P16422.Purified recombinant fragment of human EPCAM (AA: extra(116-265)) expressed in E. Coli.

Application

Dilution Ratio	WB:1:500-1:2000,IHC:1:200-1:1000,FC:1:200-1:400,ELISA:1:10000
Molecular Weight	35kDa

Product Name: EPCAM Mouse Monoclonal Antibody
Catalog #: AMM82567

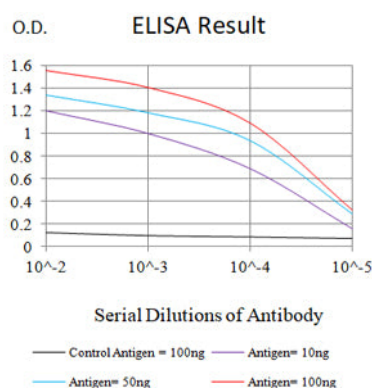


Background

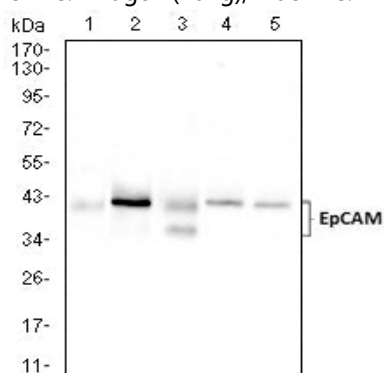
This gene encodes a carcinoma-associated antigen and is a member of a family that includes at least two type I membrane proteins. This antigen is expressed on most normal epithelial cells and gastrointestinal carcinomas and functions as a homotypic calcium-independent cell adhesion molecule. The antigen is being used as a target for immunotherapy treatment of human carcinomas. Mutations in this gene result in congenital tufting enteropathy. [provided by RefSeq, Dec 2008]

Research Area

Image Data

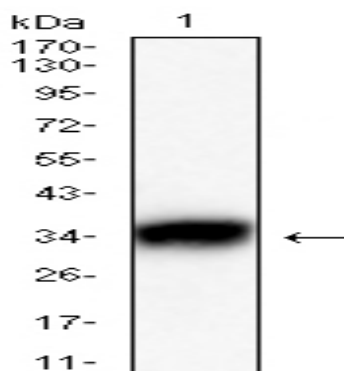


Black line: Control Antigen (100 ng); Purple line: Antigen (10ng); Blue line: Antigen (50 ng); Red line: Antigen (100 ng)

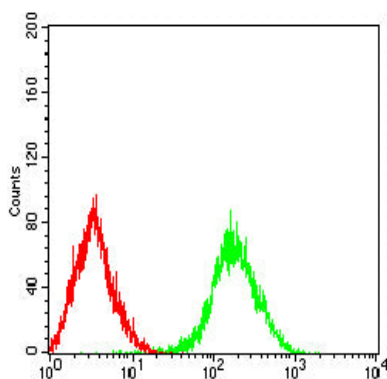


Western blot analysis using EPCAM mouse mAb against HCT116 (1), HT-29 (2), SW480 (3), SW-620 (4), and T47D (5) cell lysate.

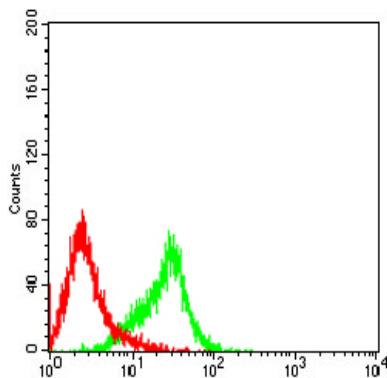
Product Name: EPCAM Mouse Monoclonal Antibody
Catalog #: AMM82567



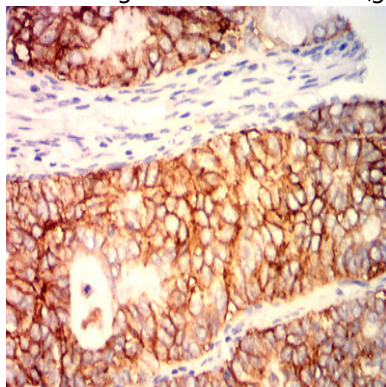
Western blot analysis using EPCAM mouse mAb against PC-12 cell lysate.



Flow cytometric analysis of Lovo cells using EPCAM mouse mAb (green) and negative control (red).



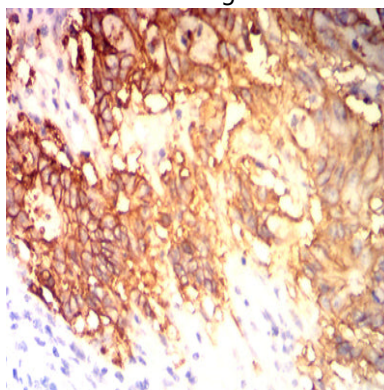
Flow cytometric analysis of COS7 cells using EPCAM mouse mAb (green) and negative control (red).



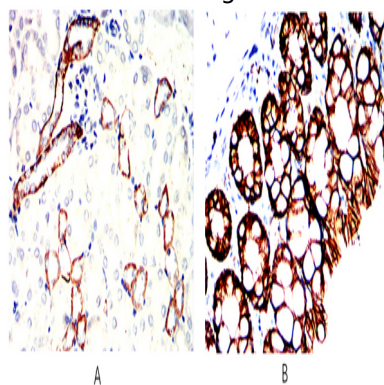
Product Name: EPCAM Mouse Monoclonal Antibody
Catalog #: AMM82567



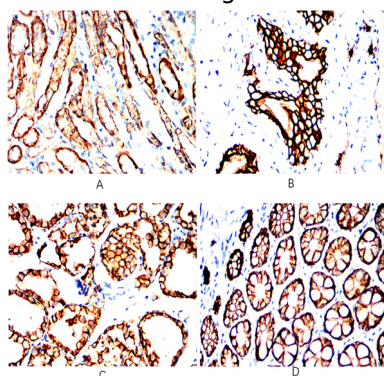
Immunohistochemical analysis of paraffin-embedded human cervical cancer tissues using EPCAM mouse mAb with DAB staining.



Immunohistochemical analysis of paraffin-embedded human colon cancer tissues using EPCAM mouse mAb with DAB staining.



Immunohistochemical analysis of paraffin-embedded Mouse kidney(A) Mouse colon(B) using EPCAM mouse mAb with DAB staining.



Immunohistochemical analysis of paraffin-embedded Rat kidney(A) Rat bladder(B) Rat thyroid(C) Rat colon(D) using EPCAM mouse mAb with DAB staining.

Product Name: EPCAM Mouse Monoclonal Antibody
Catalog #: AMM82567



Note

For research use only.