

---

**Product Name: TSLPR Mouse Monoclonal Antibody****Catalog #: AMM82557**

For research use only.

**Summary**

<b>Description</b>	Mouse monoclonal Antibody
<b>Host</b>	Mouse
<b>Application</b>	IHC,ELISA,FC
<b>Reactivity</b>	Human
<b>Conjugation</b>	Unconjugated
<b>Modification</b>	Unmodified
<b>Isotype</b>	Mouse IgG1
<b>Clonality</b>	Monoclonal
<b>Form</b>	Liquid
<b>Concentration</b>	1mg/ml
<b>Storage</b>	Aliquot and store at -20°C (valid for 12 months). Avoid freeze/thaw cycles.
<b>Shipping</b>	Ice bags
<b>Buffer</b>	Purified antibody in PBS with 0.05% sodium azide
<b>Purification</b>	Affinity Purification

**Application**

<b>Dilution Ratio</b>	IHC 1:200-1:1000,ELISA 1:5000-1:20000,FC 1:200-1:400
<b>Molecular Weight</b>	42kDa

**Antigen Information**

<b>Gene Name</b>	TSLPR
<b>Alternative Names</b>	CRL2; TSLPR; CRLF2Y
<b>Gene ID</b>	64109.0
<b>SwissProt ID</b>	Q9HC73
<b>Immunogen</b>	Purified recombinant fragment of human TSLPR (AA: extra(23-231)) expressed in E. Coli.

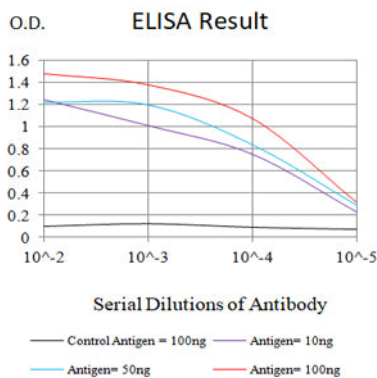
**Background**

This gene encodes a member of the type I cytokine receptor family. The encoded protein is a receptor for thymic stromal lymphopoietin (TSLP). Together with the interleukin 7 receptor (IL7R), the encoded protein and TSLP activate STAT3, STAT5, and JAK2 pathways, which control processes such as cell proliferation and development of the hematopoietic system.

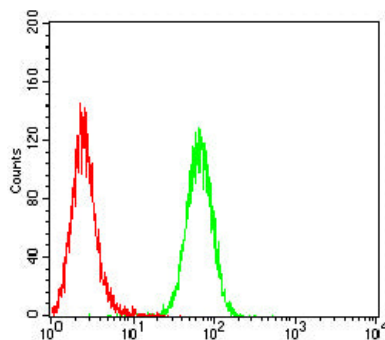
Rearrangement of this gene with immunoglobulin heavy chain gene (IGH) on chromosome 14, or with P2Y purinoceptor 8 gene (P2RY8) on the same X or Y chromosomes is associated with B-progenitor acute lymphoblastic leukemia (ALL) and Down syndrome ALL. Alternatively spliced transcript variants have been found for this gene.

## Research Area

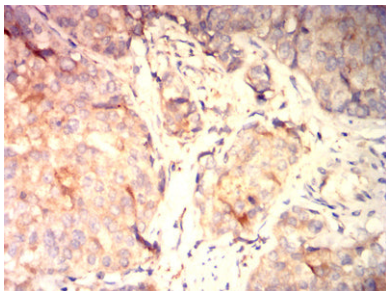
## Image Data



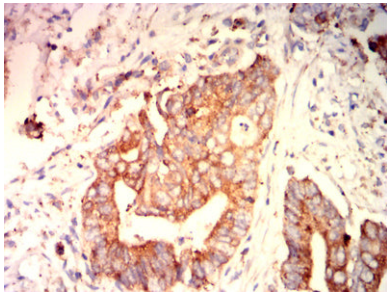
Black line: Control Antigen (100 ng);Purple line: Antigen (10ng); Blue line: Antigen (50 ng); Red line: Antigen (100 ng)



Flow cytometric analysis of THP-1 cells using TSLPR mouse mAb (green) and negative control (red).



Immunohistochemical analysis of paraffin-embedded human bladder cancer tissues using TSLPR mouse mAb with DAB staining.



Immunohistochemical analysis of paraffin-embedded human rectal cancer tissues using TSLPR mouse mAb with DAB staining.