

**Product Name: CD328 Mouse Monoclonal Antibody****Catalog #: AMM82556**

For research use only.

**Summary**

<b>Description</b>	Mouse monoclonal Antibody
<b>Host</b>	Mouse
<b>Application</b>	IHC,ELISA,FC
<b>Reactivity</b>	Human
<b>Conjugation</b>	Unconjugated
<b>Modification</b>	Unmodified
<b>Isotype</b>	Mouse IgG1
<b>Clonality</b>	Monoclonal
<b>Form</b>	Liquid
<b>Concentration</b>	1mg/ml
<b>Storage</b>	Aliquot and store at -20°C (valid for 12 months). Avoid freeze/thaw cycles.
<b>Shipping</b>	Ice bags
<b>Buffer</b>	Purified antibody in PBS with 0.05% sodium azide
<b>Purification</b>	Affinity Purification

**Application**

<b>Dilution Ratio</b>	IHC 1:200-1:1000,ELISA 1:5000-1:20000,FC 1:200-1:400
<b>Molecular Weight</b>	51.1kDa

**Antigen Information**

<b>Gene Name</b>	CD328
<b>Alternative Names</b>	p75; QA79; AIRM1; CD328; AIRM-1; CDw328; D-siglec; SIGLEC-7; SIGLECP2; SIGLEC19P; p75/AIRM1
<b>Gene ID</b>	27036.0
<b>SwissProt ID</b>	Q9Y286
<b>Immunogen</b>	Purified recombinant fragment of human CD328 (AA: extra(19-142)) expressed in E. Coli.

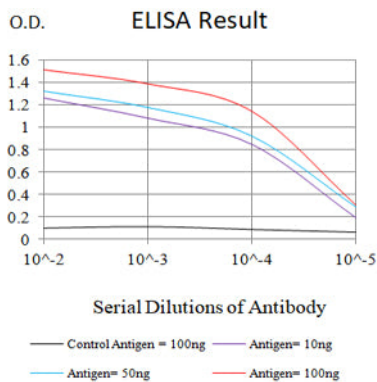
**Background**

SIGLEC7 (Sialic Acid Binding Ig Like Lectin 7) is a Protein Coding gene. Diseases associated with SIGLEC7 include Congenital Disorder Of Glycosylation, Type Iic. Among its related pathways are Hematopoietic Stem Cells and Lineage-specific Markers

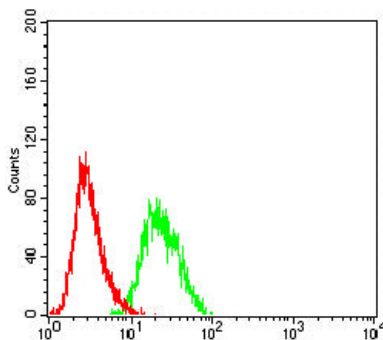
and Innate Immune System. Gene Ontology (GO) annotations related to this gene include carbohydrate binding. An important paralog of this gene is SIGLEC12.

## Research Area

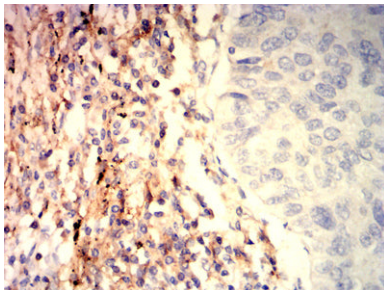
## Image Data



Black line: Control Antigen (100 ng); Purple line: Antigen (10ng); Blue line: Antigen (50 ng); Red line: Antigen (100 ng)



Flow cytometric analysis of HL-60 cells using CD328 mouse mAb (green) and negative control (red).



Immunohistochemical analysis of paraffin-embedded human lung cancer tissues using CD328 mouse mAb with DAB staining.