
Product Name: MSH6 Mouse Monoclonal Antibody**Catalog #: AMM82551**

For research use only.

Summary

Description	Mouse monoclonal Antibody
Host	Mouse
Application	WB,IHC,ICC,ELISA,FC
Reactivity	Human
Conjugation	Unconjugated
Modification	Unmodified
Isotype	Mouse IgG2b
Clonality	Monoclonal
Form	Liquid
Concentration	1mg/ml
Storage	Aliquot and store at -20°C (valid for 12 months). Avoid freeze/thaw cycles.
Shipping	Ice bags
Buffer	Purified antibody in PBS with 0.05% sodium azide
Purification	Affinity Purification

Application

Dilution Ratio	WB 1:500-1:2000,IHC 1:200-1:1000,ICC 1:200-1:1000,ELISA 1:5000-1:20000,FC 1:200-1:400
Molecular Weight	152.8kDa

Antigen Information

Gene Name	MSH6
Alternative Names	GTBP; HSAP; p160; GTMBP; HNPCC5
Gene ID	2956.0
SwissProt ID	P52701
Immunogen	Purified recombinant fragment of human MSH6 (AA: 374-540) expressed in E. Coli.

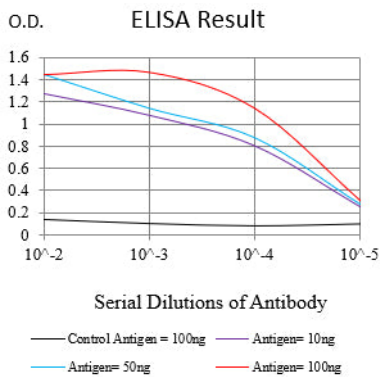
Background

This gene encodes a member of the DNA mismatch repair MutS family. In E. coli, the MutS protein helps in the recognition of mismatched nucleotides prior to their repair. A highly conserved region of approximately 150 aa, called the Walker-A adenine nucleotide binding motif, exists in MutS homologs. The encoded protein heterodimerizes with MSH2 to form a mismatch

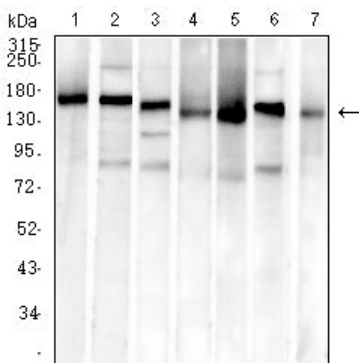
recognition complex that functions as a bidirectional molecular switch that exchanges ADP and ATP as DNA mismatches are bound and dissociated. Mutations in this gene may be associated with hereditary nonpolyposis colon cancer, colorectal cancer, and endometrial cancer. Transcripts variants encoding different isoforms have been described.

Research Area

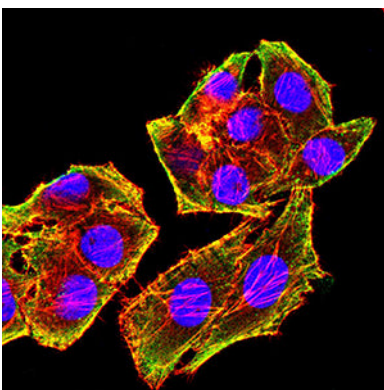
Image Data



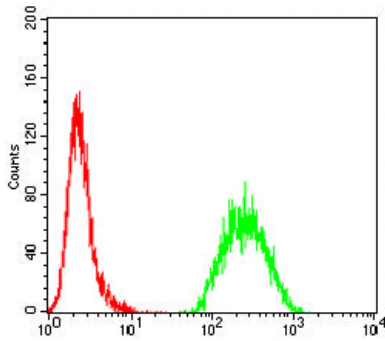
Black line: Control Antigen (100 ng);Purple line: Antigen (10ng); Blue line: Antigen (50 ng); Red line:Antigen (100 ng)



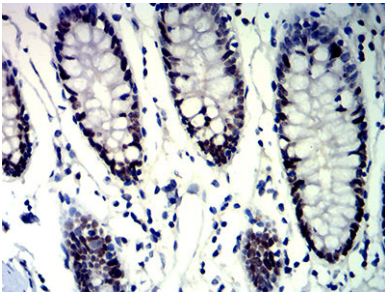
Western blot analysis using MSH6 mouse mAb against SH-SY5Y (1), HeLa (2), PC-3 (3), HCT116 (4), HEK293 (5), A549 (6), and HepG2 (7) cell lysate.



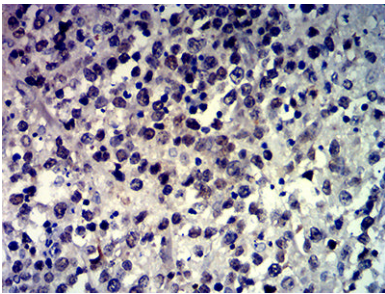
Immunofluorescence analysis of HeLa cells using MSH6 mouse mAb (green). Blue: DRAQ5 fluorescent DNA dye. Red: Actin filaments have been labeled with Alexa Fluor- 555 phalloidin.



Flow cytometric analysis of HeLa cells using MSH6 mouse mAb (green) and negative control (red).



Immunohistochemical analysis of paraffin-embedded human colon tissues using MSH6 mouse mAb with DAB staining.



Immunohistochemical analysis of paraffin-embedded human brain tumor tissues using MSH6 mouse mAb with DAB staining.