

**Product Name: CD21 Mouse Monoclonal Antibody****Catalog #: AMM82540**

For research use only.

**Summary**

<b>Description</b>	Mouse monoclonal Antibody
<b>Host</b>	Mouse
<b>Application</b>	ELISA,FC
<b>Reactivity</b>	Human
<b>Conjugation</b>	Unconjugated
<b>Modification</b>	Unmodified
<b>Isotype</b>	Mouse IgG1
<b>Clonality</b>	Monoclonal
<b>Form</b>	Liquid
<b>Concentration</b>	1mg/ml
<b>Storage</b>	Aliquot and store at -20°C (valid for 12 months). Avoid freeze/thaw cycles.
<b>Shipping</b>	Ice bags
<b>Buffer</b>	Purified antibody in PBS with 0.05% sodium azide
<b>Purification</b>	Affinity Purification

**Application**

<b>Dilution Ratio</b>	ELISA 1:5000-1:20000,FC 1:200-1:400
<b>Molecular Weight</b>	112.9kDa

**Antigen Information**

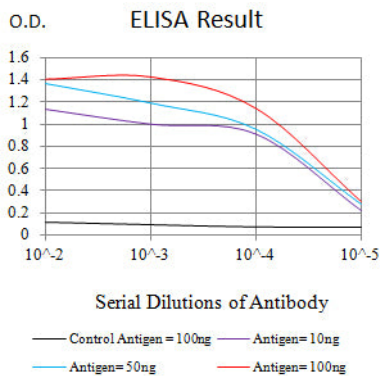
<b>Gene Name</b>	CD21
<b>Alternative Names</b>	CR2; CR; C3DR; CVID7; SLEB9
<b>Gene ID</b>	1380.0
<b>SwissProt ID</b>	P20023
<b>Immunogen</b>	Purified recombinant fragment of human CD21 (AA: extra 740-964) expressed in E. Coli.

**Background**

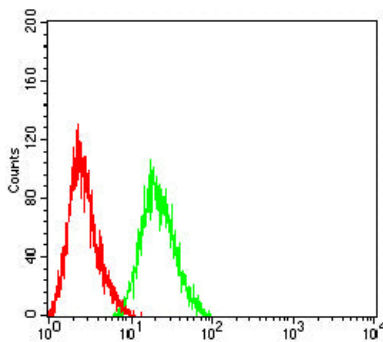
This gene encodes a membrane protein, which functions as a receptor for Epstein-Barr virus (EBV) binding on B and T lymphocytes. Genetic variations in this gene are associated with susceptibility to systemic lupus erythematosus type 9 (SLEB9). Alternatively spliced transcript variants encoding different isoforms have been found for this gene.

## Research Area

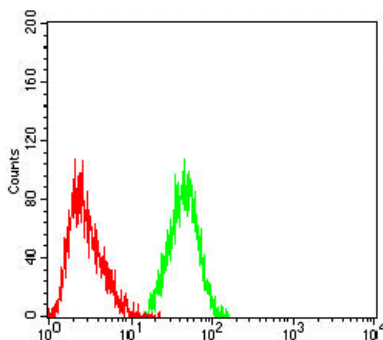
## Image Data



Black line: Control Antigen (100 ng); Purple line: Antigen (10ng); Blue line: Antigen (50 ng); Red line: Antigen (100 ng)



Flow cytometric analysis of HL-60 cells using CD21 mouse mAb (green) and negative control (red).



Flow cytometric analysis of Jurkat cells using CD21 mouse mAb (green) and negative control (red).