

Product Name: C1QA Mouse Monoclonal Antibody**Catalog #: AMM82511**

For research use only.

Summary

| | |
|----------------------|---|
| Description | Mouse monoclonal Antibody |
| Host | Mouse |
| Application | ELISA,FC |
| Reactivity | Human |
| Conjugation | Unconjugated |
| Modification | Unmodified |
| Isotype | Mouse IgG2b |
| Clonality | Monoclonal |
| Form | Liquid |
| Concentration | 1mg/ml |
| Storage | Aliquot and store at -20°C (valid for 12 months). Avoid freeze/thaw cycles. |
| Shipping | Ice bags |
| Buffer | Purified antibody in PBS with 0.05% sodium azide |
| Purification | Affinity Purification |

Application

| | |
|-------------------------|-------------------------------------|
| Dilution Ratio | ELISA 1:5000-1:20000,FC 1:200-1:400 |
| Molecular Weight | 26kDa |

Antigen Information

| | |
|--------------------------|--|
| Gene Name | C1QA |
| Alternative Names | C1QA |
| Gene ID | 712.0 |
| SwissProt ID | P02745 |
| Immunogen | Purified recombinant fragment of human C1QA (AA: 96-245) expressed in E. Coli. |

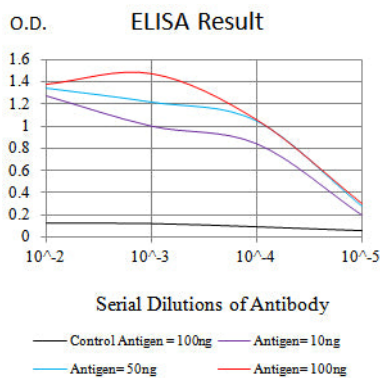
Background

This gene encodes the A-chain polypeptide of serum complement subcomponent C1q, which associates with C1r and C1s to yield the first component of the serum complement system. C1q deficiency is associated with lupus erythematosus and glomerulonephritis. C1q is composed of 18 polypeptide chains which include 6 A-chains, 6 B-chains, and 6 C-chains. Each chain

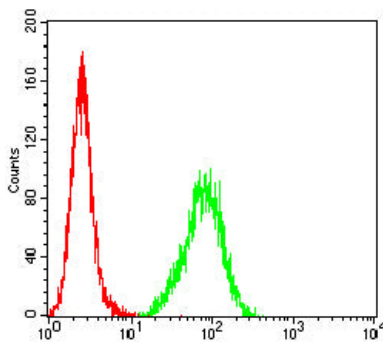
contains an N-terminal collagen-like region and a C-terminal C1q globular domain. Alternate splicing results in multiple transcript variants.

Research Area

Image Data



Black line: Control Antigen (100 ng);Purple line: Antigen (10ng); Blue line: Antigen (50 ng); Red line: Antigen (100 ng)



Flow cytometric analysis of Hela cells using C1QA mouse mAb (green) and negative control (red).