

**Product Name: PAX2 Mouse Monoclonal Antibody****Catalog #: AMM82456**

For research use only.

**Summary**

<b>Description</b>	Mouse monoclonal Antibody
<b>Host</b>	Mouse
<b>Application</b>	ELISA,FC
<b>Reactivity</b>	Human
<b>Conjugation</b>	Unconjugated
<b>Modification</b>	Unmodified
<b>Isotype</b>	Mouse IgG1
<b>Clonality</b>	Monoclonal
<b>Form</b>	Liquid
<b>Concentration</b>	1mg/ml
<b>Storage</b>	Aliquot and store at -20°C (valid for 12 months). Avoid freeze/thaw cycles.
<b>Shipping</b>	Ice bags
<b>Buffer</b>	Purified antibody in PBS with 0.05% sodium azide
<b>Purification</b>	Affinity Purification

**Application**

<b>Dilution Ratio</b>	ELISA 1:5000-1:20000,FC 1:200-1:400
<b>Molecular Weight</b>	44.7kDa

**Antigen Information**

<b>Gene Name</b>	PAX2
<b>Alternative Names</b>	FSGS7; PAPRS
<b>Gene ID</b>	5076.0
<b>SwissProt ID</b>	Q02962
<b>Immunogen</b>	Purified recombinant fragment of human PAX2 (AA: 194-304) expressed in E. Coli.

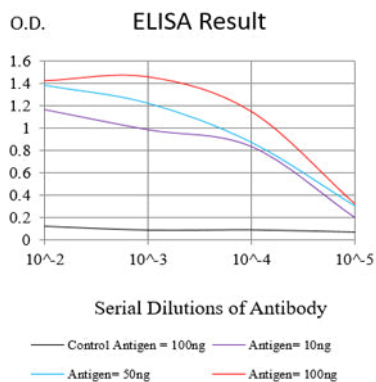
**Background**

PAX2 encodes paired box gene 2, one of many human homologues of the Drosophila melanogaster gene prd. The central feature of this transcription factor gene family is the conserved DNA-binding paired box domain. PAX2 is believed to be a target of transcriptional suppression by the tumor suppressor gene WT1. Mutations within PAX2 have been shown to result in

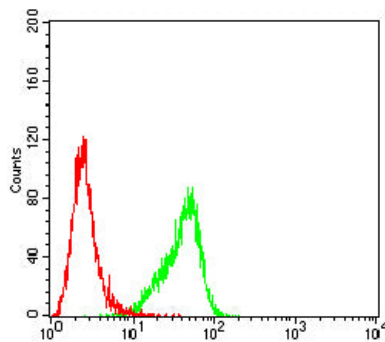
optic nerve colobomas and renal hypoplasia. Alternative splicing of this gene results in multiple transcript variants. [provided by RefSeq, Dec 2014]

## Research Area

## Image Data



Black line: Control Antigen (100 ng); Purple line: Antigen (10ng); Blue line: Antigen (50 ng); Red line: Antigen (100 ng)



Flow cytometric analysis of Hela cells using PAX2 mouse mAb (green) and negative control (red).