
Product Name: CD300C Mouse Monoclonal Antibody**Catalog #: AMM82405**

For research use only.

Summary

Description	Mouse monoclonal Antibody
Host	Mouse
Application	ELISA,FC
Reactivity	Human
Conjugation	Unconjugated
Modification	Unmodified
Isotype	Mouse IgG2a
Clonality	Monoclonal
Form	Liquid
Concentration	1mg/ml
Storage	Aliquot and store at -20°C (valid for 12 months). Avoid freeze/thaw cycles.
Shipping	Ice bags
Buffer	Purified antibody in PBS with 0.05% sodium azide
Purification	Affinity Purification

Application

Dilution Ratio	ELISA 1:5000-1:20000,FC 1:200-1:400
Molecular Weight	24.8kDa

Antigen Information

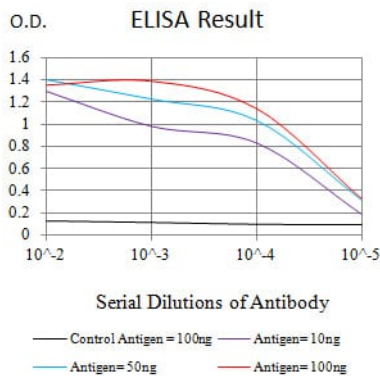
Gene Name	CD300C
Alternative Names	LIR; CLM-6; CMRF35; IGSF16; CMRF-35; CMRF35A; CMRF-35A; CMRF35A1; CMRF35-A1
Gene ID	10871.0
SwissProt ID	Q08708
Immunogen	Purified recombinant fragment of human CD300C (AA: 21-183) expressed in E. Coli.

Background

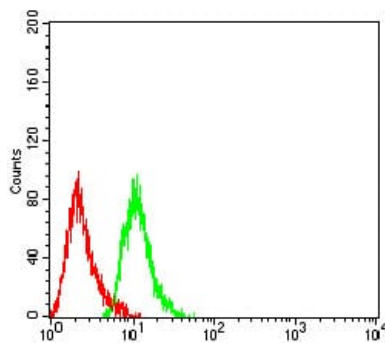
The CMRF35 antigen, which was identified by reactivity with a monoclonal antibody, is present on monocytes, neutrophils, and some T and B lymphocytes (Jackson et al., 1992 [PubMed 1349532]).

Research Area

Image Data



Black line: Control Antigen (100 ng);Purple line: Antigen (10ng); Blue line: Antigen (50 ng); Red line:Antigen (100 ng)



Flow cytometric analysis of THP-1 cells using CD300C mouse mAb (green) and negative control (red).