

Product Name: GPC3 Mouse Monoclonal Antibody**Catalog #: AMM82403**

For research use only.

Summary

Description	Mouse monoclonal Antibody
Host	Mouse
Application	WB,ELISA,FC
Reactivity	Human, Rat
Conjugation	Unconjugated
Modification	Unmodified
Isotype	Mouse IgG1
Clonality	Monoclonal
Form	Liquid
Concentration	1mg/ml
Storage	Aliquot and store at -20°C (valid for 12 months). Avoid freeze/thaw cycles.
Shipping	Ice bags
Buffer	Purified antibody in PBS with 0.05% sodium azide
Purification	Affinity Purification

Application

Dilution Ratio	WB 1:500-1:2000,ELISA 1:5000-1:20000,FC 1:200-1:400
Molecular Weight	65.5kDa

Antigen Information

Gene Name	GPC3
Alternative Names	SGB; DGSX; MXR7; SDYS; SGBS; OCI-5; SGBS1; GTR2-2
Gene ID	2719.0
SwissProt ID	P51654
Immunogen	Purified recombinant fragment of human GPC3 (AA: 359-554) expressed in E. Coli.

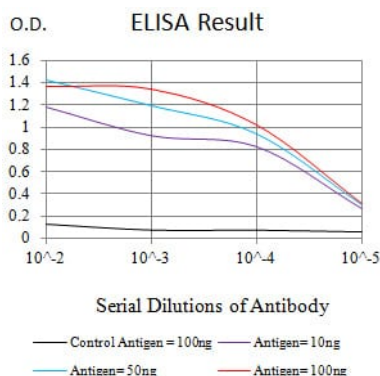
Background

Cell surface heparan sulfate proteoglycans are composed of a membrane-associated protein core substituted with a variable number of heparan sulfate chains. Members of the glypican-related integral membrane proteoglycan family (GRIPS) contain a core protein anchored to the cytoplasmic membrane via a glycosyl phosphatidylinositol linkage. These proteins may play a role

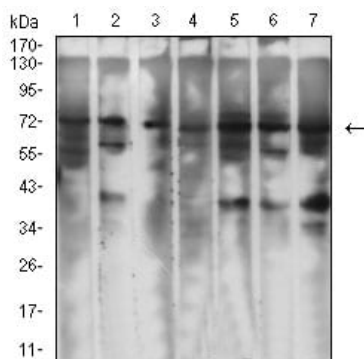
in the control of cell division and growth regulation. The protein encoded by this gene can bind to and inhibit the dipeptidyl peptidase activity of CD26, and it can induce apoptosis in certain cell types. Deletion mutations in this gene are associated with Simpson-Golabi-Behmel syndrome, also known as Simpson dysmorphia syndrome. Alternative splicing results in multiple transcript variants.

Research Area

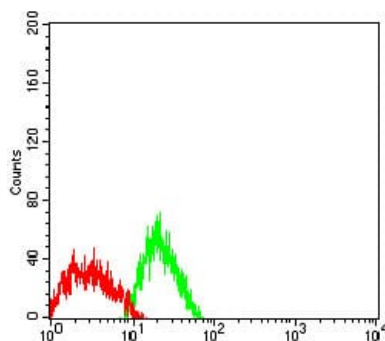
Image Data



Black line: Control Antigen (100 ng);Purple line: Antigen (10ng); Blue line: Antigen (50 ng); Red line:Antigen (100 ng)



Western blot analysis using GPC3 mouse mAb against SW480 (1), HCT116 (2), SH-SY5Y (3), HepG2 (4), PC-12 (5), HEK293 (6), and Hela (7) cell lysate.



Flow cytometric analysis of SK-N-SH cells using GPC3 mouse mAb (green) and negative control (red).