

Product Name: COL1A2 Mouse Monoclonal Antibody**Catalog #: AMM82402**

For research use only.

Summary

Description	Mouse monoclonal Antibody
Host	Mouse
Application	WB,ICC,ELISA,FC
Reactivity	Human,Mouse,Rat,Monkey
Conjugation	Unconjugated
Modification	Unmodified
Isotype	Mouse IgG1
Clonality	Monoclonal
Form	Liquid
Concentration	1mg/ml
Storage	Aliquot and store at -20°C (valid for 12 months). Avoid freeze/thaw cycles.
Shipping	Ice bags
Buffer	Purified antibody in PBS with 0.05% sodium azide
Purification	Affinity Purification

Application

Dilution Ratio	WB 1:500-1:1000,ICC 1:200-1:1000,ELISA 1:5000-1:20000,FC 1:200-1:400
Molecular Weight	129kDa

Antigen Information

Gene Name	COL1A2
Alternative Names	OI4; EDSCV; EDSARTH2
Gene ID	1278.0
SwissProt ID	P08123
Immunogen	Purified recombinant fragment of human COL1A2 (AA: 23-79) expressed in E. Coli.

Background

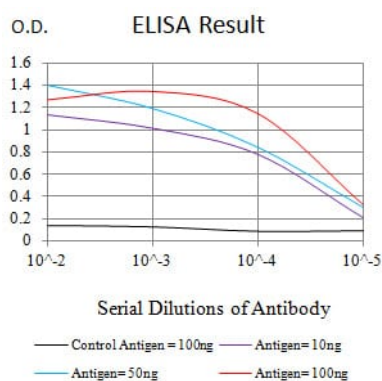
This gene encodes the pro-alpha2 chain of type I collagen whose triple helix comprises two alpha1 chains and one alpha2 chain. Type I is a fibril-forming collagen found in most connective tissues and is abundant in bone, cornea, dermis and tendon. Mutations in this gene are associated with osteogenesis imperfecta types I-IV, Ehlers-Danlos syndrome type VIIB, recessive

Ehlers-Danlos syndrome Classical type, idiopathic osteoporosis, and atypical Marfan syndrome. Symptoms associated with mutations in this gene, however, tend to be less severe than mutations in the gene for the alpha1 chain of type I collagen (COL1A1) reflecting the different role of alpha2 chains in matrix integrity. Three transcripts, resulting from the use of alternate polyadenylation signals, have been identified for this gene.

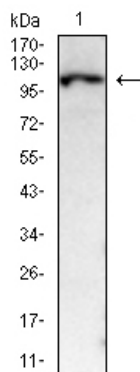
Research Area

PI3K-Akt signaling pathway

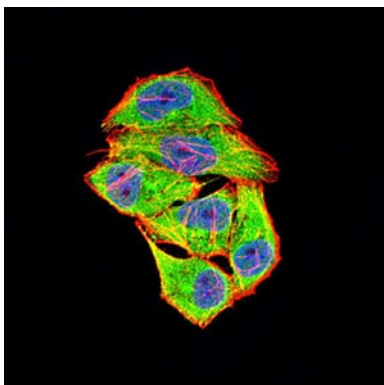
Image Data



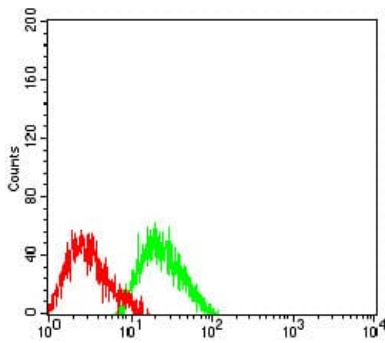
Black line: Control Antigen (100 ng);Purple line: Antigen (10ng); Blue line: Antigen (50 ng); Red line:Antigen (100 ng)



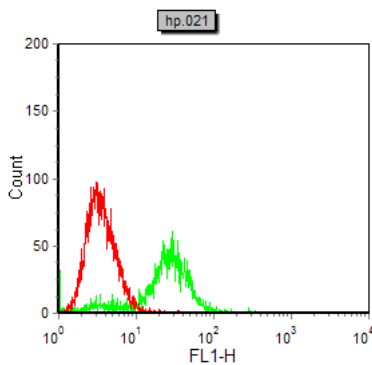
Western blot analysis using THY1 mouse mAb against NIH/3T3 cell lysate.



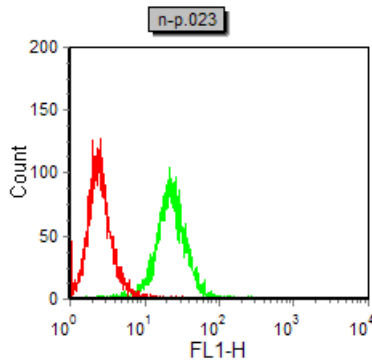
Immunofluorescence analysis of HeLa cells using COL1A2 mouse mAb (green). Blue: DRAQ5 fluorescent DNA dye. Red: Actin filaments have been labeled with Alexa Fluor- 555 phalloidin.



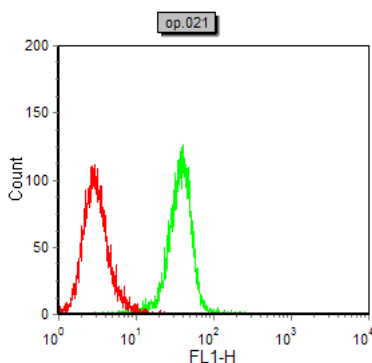
Flow cytometric analysis of SW480 cells using COL1A2 mouse mAb (green) and negative control (red).



Flow cytometric analysis of Hela cells using COL1A2 mouse mAb (green) and negative control (red).



Flow cytometric analysis of NIH/3T3 cells using COL1A2 mouse mAb (green) and negative control (red).



Flow cytometric analysis of COS7 cells using COL1A2 mouse mAb (green) and negative control (red).