

Product Name: KMT2C Mouse Monoclonal Antibody**Catalog #: AMM82259**

For research use only.

Summary

Description	Mouse monoclonal Antibody
Host	Mouse
Application	ELISA,FC
Reactivity	Human
Conjugation	Unconjugated
Modification	Unmodified
Isotype	Mouse IgG1
Clonality	Monoclonal
Form	Liquid
Concentration	1mg/ml
Storage	Aliquot and store at -20°C (valid for 12 months). Avoid freeze/thaw cycles.
Shipping	Ice bags
Buffer	Purified antibody in PBS with 0.05% sodium azide
Purification	Affinity Purification

Application

Dilution Ratio	ELISA 1:5000-1:20000,FC 1:200-1:400
Molecular Weight	541.4kDa

Antigen Information

Gene Name	KMT2C
Alternative Names	HALR; MLL3; KLEFS2
Gene ID	58508.0
SwissProt ID	Q8NEZ4
Immunogen	Purified recombinant fragment of human KMT2C (AA: 1-205) expressed in E. Coli.

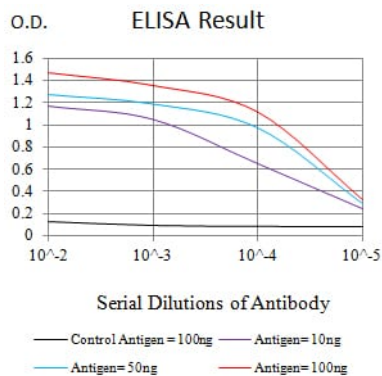
Background

This gene is a member of the myeloid/lymphoid or mixed-lineage leukemia (MLL) family and encodes a nuclear protein with an AT hook DNA-binding domain, a DHHC-type zinc finger, six PHD-type zinc fingers, a SET domain, a post-SET domain and a RING-type zinc finger. This protein is a member of the ASC-2/NCOA6 complex (ASCOM), which possesses histone methylation

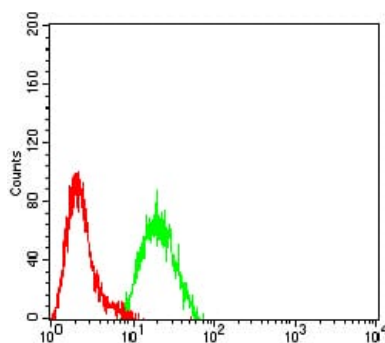
activity and is involved in transcriptional coactivation. [provided by RefSeq, Jul 2008]

Research Area

Image Data



Black line: Control Antigen (100 ng);Purple line: Antigen (10ng); Blue line: Antigen (50 ng); Red line:Antigen (100 ng)



Flow cytometric analysis of Hela cells using KMT2C mouse mAb (green) and negative control (red).