

Product Name: CD222 Mouse Monoclonal Antibody
Catalog #: AMM82240



Summary

Production Name	CD222 Mouse Monoclonal Antibody
Description	Mouse Monoclonal Antibody
Host	Mouse
Application	ELISA
Reactivity	Human

Performance

Conjugation	Unconjugated
Modification	Unmodified
Isotype	Mouse IgG1
Clonality	Monoclonal
Form	Liquid
Storage	Store at 4°C short term. Aliquot and store at -20°C long term. Avoid freeze/thaw cycles.
Buffer	Purified antibody in PBS with 0.05% sodium azide
Purification	Affinity Purification

Immunogen

Gene Name	CD222
Alternative Names	IGF2R; MPR1; MPRI; CIMPR; M6P-R; MPR300; CI-M6PR; MPR 300; M6P/IGF2R
Gene ID	3482.0
SwissProt ID	P11717. Purified recombinant fragment of human CD222 (AA: 160-311) expressed in E. Coli.

Application

Dilution Ratio	ELISA:1:10000
Molecular Weight	274kDa

Background

This gene encodes a receptor for both insulin-like growth factor 2 and mannose 6-phosphate. The binding sites for each

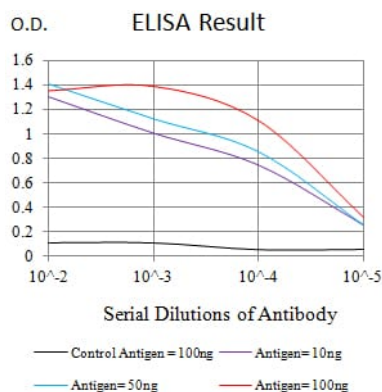
Product Name: CD222 Mouse Monoclonal Antibody
Catalog #: AMM82240



ligand are located on different segments of the protein. This receptor has various functions, including in the intracellular trafficking of lysosomal enzymes, the activation of transforming growth factor beta, and the degradation of insulin-like growth factor 2. Mutation or loss of heterozygosity of this gene has been association with risk of hepatocellular carcinoma. The orthologous mouse gene is imprinted and shows exclusive expression from the maternal allele; however, imprinting of the human gene may be polymorphic, as only a minority of individuals showed biased expression from the maternal allele (PMID:8267611). [provided by RefSeq, Nov 2015]

Research Area

Image Data



Black line: Control Antigen (100 ng);Purple line: Antigen (10ng); Blue line: Antigen (50 ng); Red line:Antigen (100 ng)

Note

For research use only.