

---

**Product Name: CD368 Mouse Monoclonal Antibody****Catalog #: AMM82232**

For research use only.

**Summary**

<b>Description</b>	Mouse monoclonal Antibody
<b>Host</b>	Mouse
<b>Application</b>	ELISA,FC
<b>Reactivity</b>	Human
<b>Conjugation</b>	Unconjugated
<b>Modification</b>	Unmodified
<b>Isotype</b>	Mouse IgG1
<b>Clonality</b>	Monoclonal
<b>Form</b>	Liquid
<b>Concentration</b>	1mg/ml
<b>Storage</b>	Aliquot and store at -20°C (valid for 12 months). Avoid freeze/thaw cycles.
<b>Shipping</b>	Ice bags
<b>Buffer</b>	Purified antibody in PBS with 0.05% sodium azide
<b>Purification</b>	Affinity Purification

**Application**

<b>Dilution Ratio</b>	ELISA 1:5000-1:20000,FC 1:200-1:400
<b>Molecular Weight</b>	24.7kDa

**Antigen Information**

<b>Gene Name</b>	CD368
<b>Alternative Names</b>	CLEC4D; MCL; MPCL; CLEC6; CLEC-6; CLECSF8; Dectin-3
<b>Gene ID</b>	338339.0
<b>SwissProt ID</b>	Q8WXI8
<b>Immunogen</b>	Purified recombinant fragment of human CD368 (AA: extra 39-215) expressed in E. Coli.

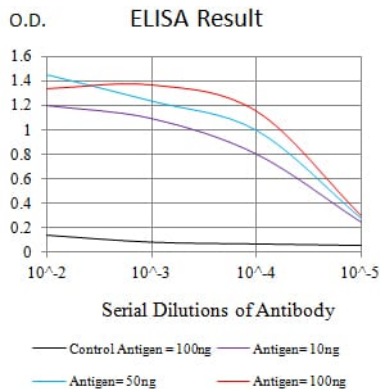
**Background**

This gene encodes a member of the C-type lectin/C-type lectin-like domain (CTL/CTLD) superfamily. Members of this family share a common protein fold and have diverse functions, such as cell adhesion, cell-cell signalling, glycoprotein turnover, and roles in inflammation and immune response. This gene is closely linked to other CTL/CTLD superfamily members on

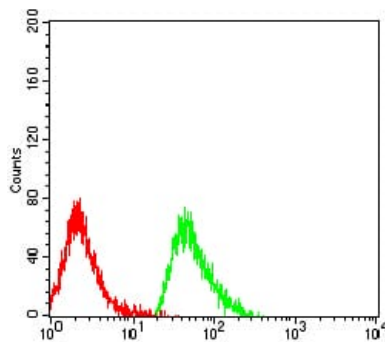
chromosome 12p13 in the natural killer gene complex region. [provided by RefSeq, Jul 2008]

## Research Area

## Image Data



Black line: Control Antigen (100 ng);Purple line: Antigen (10ng); Blue line: Antigen (50 ng); Red line:Antigen (100 ng)



Flow cytometric analysis of MOLT4 cells using CD368 mouse mAb (green) and negative control (red).