

**Product Name: KAT2B Mouse Monoclonal Antibody****Catalog #: AMM82229**

For research use only.

**Summary**

|                      |   |
|----------------------|---|
| <b>Description</b>   | Mouse monoclonal Antibody   |
| <b>Host</b>          | Mouse   |
| <b>Application</b>   | IHC, ICC, ELISA, FC   |
| <b>Reactivity</b>    | Human, Mouse, Rat, Monkey   |
| <b>Conjugation</b>   | Unconjugated  |
| <b>Modification</b>  | Unmodified  |
| <b>Isotype</b>       | Mouse IgG1  |
| <b>Clonality</b>     | Monoclonal  |
| <b>Form</b>          | Liquid  |
| <b>Concentration</b> | 1mg/ml  |
| <b>Storage</b>       | Aliquot and store at -20°C (valid for 12 months). Avoid freeze/thaw cycles. |
| <b>Shipping</b>      | Ice bags  |
| <b>Buffer</b>        | Purified antibody in PBS with 0.05% sodium azide                            |
| <b>Purification</b>  | Affinity Purification   |

**Application**

|                         |  |
|-------------------------|--|
| <b>Dilution Ratio</b>   | IHC 1:200-1:1000, ICC 1:200-1:1000, ELISA 1:5000-1:20000, FC 1:200-1:400 |
| <b>Molecular Weight</b> | 93kDa  |

**Antigen Information**

|                          |  |
|--------------------------|--|
| <b>Gene Name</b>         | KAT2B  |
| <b>Alternative Names</b> | CAF; PCAF; P/CAF   |
| <b>Gene ID</b>           | 8850.0   |
| <b>SwissProt ID</b>      | Q92831   |
| <b>Immunogen</b>         | Purified recombinant fragment of human KAT2B (AA: 1-142) expressed in E. Coli. |

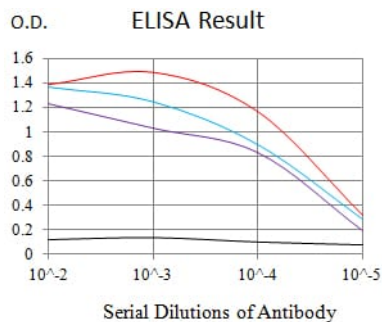
**Background**

CBP and p300 are large nuclear proteins that bind to many sequence-specific factors involved in cell growth and/or differentiation, including c-jun and the adenoviral oncoprotein E1A. The protein encoded by this gene associates with p300/CBP. It has in vitro and in vivo binding activity with CBP and p300, and competes with E1A for binding sites in p300/CBP. It

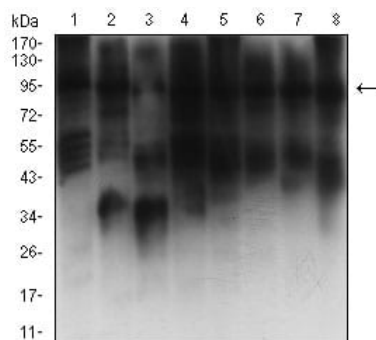
has histone acetyl transferase activity with core histones and nucleosome core particles, indicating that this protein plays a direct role in transcriptional regulation.

## Research Area

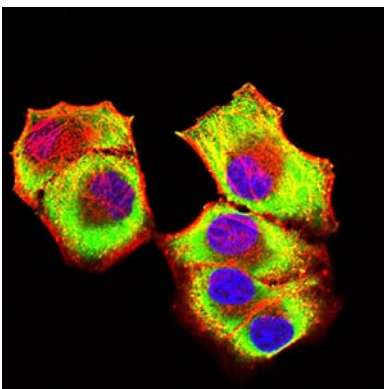
## Image Data



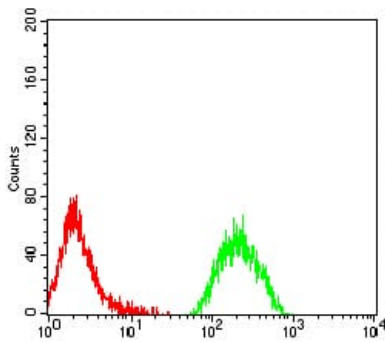
Black line: Control Antigen (100 ng); Purple line: Antigen (10ng); Blue line: Antigen (50 ng); Red line: Antigen (100 ng)



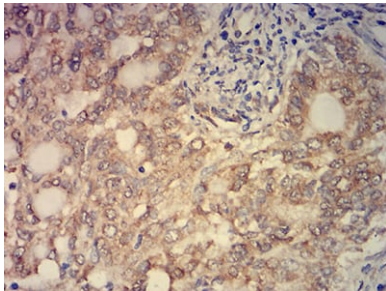
Western blot analysis using KAT2B mouse mAb against C2C12 (1), COS7 (2), HepG2 (3), HCT116 (4), A431 (5), LNCAP (6), NIH/3T3 (7), and F9 (8) cell lysate.



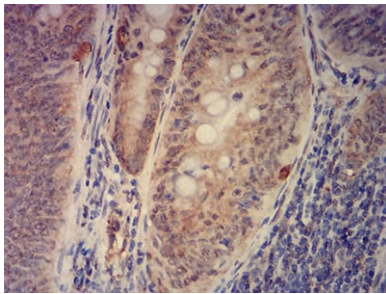
Immunofluorescence analysis of HeLa cells using KAT2B mouse mAb (green). Blue: DRAQ5 fluorescent DNA dye. Red: Actin filaments have been labeled with Alexa Fluor-555 phalloidin.



Flow cytometric analysis of MOLT4 cells using KAT2B mouse mAb (green) and negative control (red).



Immunohistochemical analysis of paraffin-embedded human cervical cancer tissues using KAT2B mouse mAb with DAB staining.



Immunohistochemical analysis of paraffin-embedded human rectum cancer tissues using KAT2B mouse mAb with DAB staining.