
Summary

Production Name	CLL1 Mouse Monoclonal Antibody
Description	Mouse Monoclonal Antibody
Host	Mouse
Application	WB, ICC, FC, ELISA
Reactivity	Human

Performance

Conjugation	Unconjugated
Modification	Unmodified
Isotype	Mouse IgG2a
Clonality	Monoclonal
Form	Liquid
Storage	Store at 4°C short term. Aliquot and store at -20°C long term. Avoid freeze/thaw cycles.
Buffer	Purified antibody in PBS with 0.05% sodium azide
Purification	Affinity Purification

Immunogen

Gene Name	CLL1
Alternative Names	CLEC12A; MICL; CD371; CLL-1; DCAL-2
Gene ID	160364.0
SwissProt ID	Q5QGZ9. Purified recombinant fragment of human CLL1 (AA: extra 65-265) expressed in E. Coli.

Application

Dilution Ratio	WB:1:500-1:2000, ICC:1:200-1:500, FC:1:200-1:400, ELISA:1:10000
Molecular Weight	30.8kDa

Background

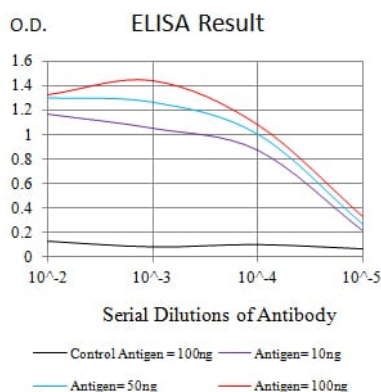
Product Name: CLL1 Mouse Monoclonal Antibody
Catalog #: AMM82147



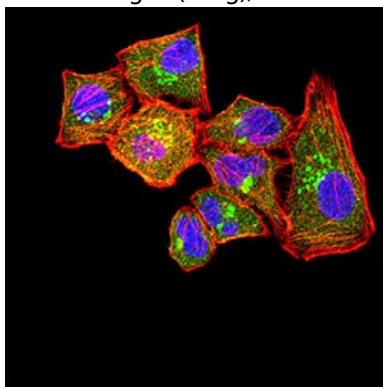
This gene encodes a member of the C-type lectin/C-type lectin-like domain (CTL/CTLD) superfamily. Members of this family share a common protein fold and have diverse functions, such as cell adhesion, cell-cell signaling, glycoprotein turnover, and roles in inflammation and immune response. The protein encoded by this gene is a negative regulator of granulocyte and monocyte function. Several alternatively spliced transcript variants of this gene have been described, but the full-length nature of some of these variants has not been determined. This gene is closely linked to other CTL/CTLD superfamily members in the natural killer gene complex region on chromosome 12p13.

Research Area

Image Data

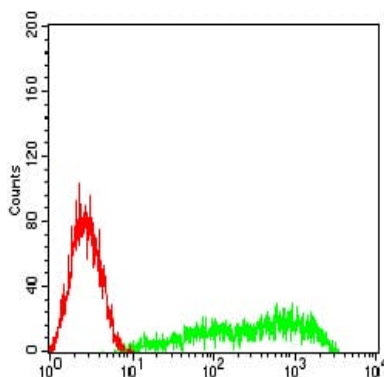


Black line: Control Antigen (100 ng);Purple line: Antigen (10ng); Blue line: Antigen (50 ng); Red line:Antigen (100 ng)



Immunofluorescence analysis of HeLa cells using CLL1 mouse mAb (green). Blue: DRAQ5 fluorescent DNA dye. Red: Actin filaments have been labeled with Alexa Fluor- 555 phalloidin. Secondary antibody from Fisher (Cat#: 35503)

Product Name: CLL1 Mouse Monoclonal Antibody
Catalog #: AMM82147



Flow cytometric analysis of HL-60 cells using CLL1 mouse mAb (green) and negative control (red).

Note

For research use only.