

**Product Name: CCL4 Mouse Monoclonal Antibody**  
**Catalog #: AMM82088**



## Summary

<b>Production Name</b>	CCL4 Mouse Monoclonal Antibody
<b>Description</b>	Mouse Monoclonal Antibody
<b>Host</b>	Mouse
<b>Application</b>	FC,ELISA
<b>Reactivity</b>	Human

## Performance

<b>Conjugation</b>	Unconjugated
<b>Modification</b>	Unmodified
<b>Isotype</b>	Mouse IgG2b
<b>Clonality</b>	Monoclonal
<b>Form</b>	Liquid
<b>Storage</b>	Store at 4°C short term. Aliquot and store at -20°C long term. Avoid freeze/thaw cycles.
<b>Buffer</b>	Purified antibody in PBS with 0.05% sodium azide
<b>Purification</b>	Affinity Purification

## Immunogen

<b>Gene Name</b>	CCL4
<b>Alternative Names</b>	ACT2; G-26; HC21; LAG1; LAG-1; MIP1B; SCYA2; SCYA4; MIP1B1; AT744.1; MIP-1-beta
<b>Gene ID</b>	6351.0
<b>SwissProt ID</b>	P13236.Purified recombinant fragment of human CCL4 (AA: 24-92) expressed in E. Coli.

## Application

<b>Dilution Ratio</b>	FC:1:200-1:400,ELISA:1:10000
<b>Molecular Weight</b>	10.2kDa

## Background

The protein encoded by this gene is a mitogen-inducible monokine and is one of the major HIV-suppressive factors

**Product Name: CCL4 Mouse Monoclonal Antibody**  
**Catalog #: AMM82088**

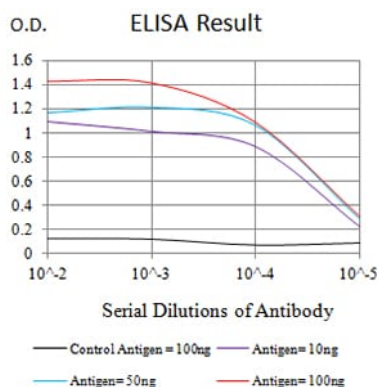


produced by CD8+ T-cells. The encoded protein is secreted and has chemokinetic and inflammatory functions.

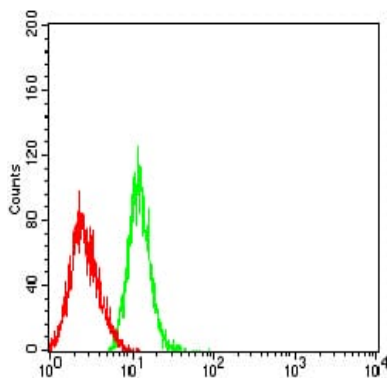
## Research Area

TGF-beta signaling pathway

## Image Data



Black line: Control Antigen (100 ng);Purple line: Antigen (10ng); Blue line: Antigen (50 ng); Red line:Antigen (100 ng)



Flow cytometric analysis of HL-60 cells using CCL4 mouse mAb (green) and negative control (red).

## Note

For research use only.