
Product Name: CD16B Mouse Monoclonal Antibody**Catalog #: AMM82084**

For research use only.

Summary

| | |
|----------------------|---|
| Description | Mouse monoclonal Antibody |
| Host | Mouse |
| Application | ELISA,FC |
| Reactivity | Human |
| Conjugation | Unconjugated |
| Modification | Unmodified |
| Isotype | Mouse IgG1 |
| Clonality | Monoclonal |
| Form | Liquid |
| Concentration | 1mg/ml |
| Storage | Aliquot and store at -20°C (valid for 12 months). Avoid freeze/thaw cycles. |
| Shipping | Ice bags |
| Buffer | Purified antibody in PBS with 0.05% sodium azide |
| Purification | Affinity Purification |

Application

| | |
|-------------------------|-------------------------------------|
| Dilution Ratio | ELISA 1:5000-1:20000,FC 1:200-1:400 |
| Molecular Weight | 26.2kDa |

Antigen Information

| | |
|--------------------------|---|
| Gene Name | CD16B |
| Alternative Names | FCGR3B; CD16; FCG3; CD16A; FCGR3; FCGR3A; FCR-10; FCRIII; FCRIIIb |
| Gene ID | 2215.0 |
| SwissProt ID | O75015 |
| Immunogen | Purified recombinant fragment of human CD16B (AA: 17-200) expressed in E. Coli. |

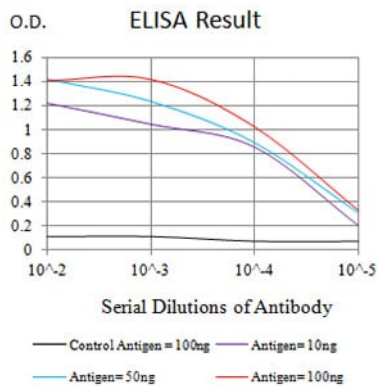
Background

The protein encoded by this gene is a low affinity receptor for the Fc region of gamma immunoglobulins (IgG). The encoded protein acts as a monomer and can bind either monomeric or aggregated IgG. This gene may function to capture immune complexes in the peripheral circulation. Several transcript variants encoding different isoforms have been found for this gene. A

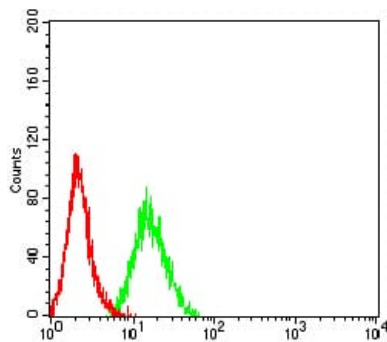
highly-similar gene encoding a related protein is also found on chromosome 1.

Research Area

Image Data



Black line: Control Antigen (100 ng);Purple line: Antigen (10ng); Blue line: Antigen (50 ng); Red line:Antigen (100 ng)



Flow cytometric analysis of Hela cells using CD16B mouse mAb (green) and negative control (red).