

---

**Product Name: CD335 Mouse Monoclonal Antibody****Catalog #: AMM82068**

For research use only.

**Summary**

<b>Description</b>	Mouse monoclonal Antibody
<b>Host</b>	Mouse
<b>Application</b>	ELISA,FC
<b>Reactivity</b>	Human
<b>Conjugation</b>	Unconjugated
<b>Modification</b>	Unmodified
<b>Isotype</b>	Mouse IgG1
<b>Clonality</b>	Monoclonal
<b>Form</b>	Liquid
<b>Concentration</b>	1mg/ml
<b>Storage</b>	Aliquot and store at -20°C (valid for 12 months). Avoid freeze/thaw cycles.
<b>Shipping</b>	Ice bags
<b>Buffer</b>	Purified antibody in PBS with 0.05% sodium azide
<b>Purification</b>	Affinity Purification

**Application**

<b>Dilution Ratio</b>	ELISA 1:5000-1:20000,FC 1:200-1:400
<b>Molecular Weight</b>	34.5kDa

**Antigen Information**

<b>Gene Name</b>	CD335
<b>Alternative Names</b>	NCR1; LY94; NKP46; NK-p46
<b>Gene ID</b>	9437.0
<b>SwissProt ID</b>	O76036
<b>Immunogen</b>	Purified recombinant fragment of human CD335 (AA: extra 22-258) expressed in E. Coli.

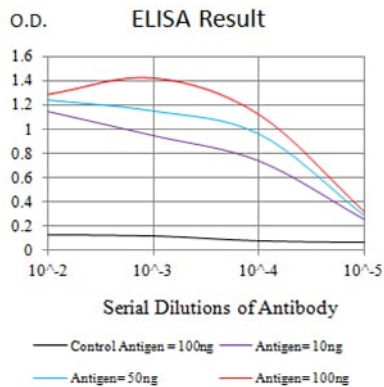
**Background**

NCR1 (Natural Cytotoxicity Triggering Receptor 1) is a Protein Coding gene. Diseases associated with NCR1 include Viral Infectious Disease. Among its related pathways are Immunoregulatory interactions between a Lymphoid and a non-Lymphoid cell and Natural Killer Cell Receptors: Human Target Cell – NK Cell Ligand-Receptor Interactions. GO annotations related to this

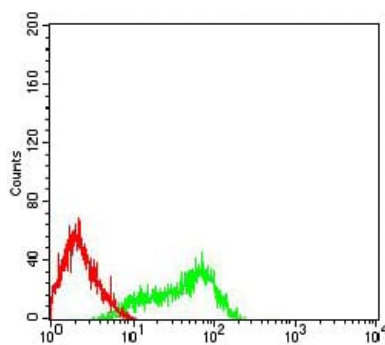
gene include signal transducer activity, downstream of receptor. An important paralog of this gene is LILRB3.

## Research Area

## Image Data



Black line: Control Antigen (100 ng);Purple line: Antigen (10ng); Blue line: Antigen (50 ng); Red line:Antigen (100 ng)



Flow cytometric analysis of HL-60 cells using CD335 mouse mAb (green) and negative control (red).