

---

**Product Name: CD3D Mouse Monoclonal Antibody****Catalog #: AMM82059**

For research use only.

**Summary**

<b>Description</b>	Mouse monoclonal Antibody
<b>Host</b>	Mouse
<b>Application</b>	ELISA,FC
<b>Reactivity</b>	Human
<b>Conjugation</b>	Unconjugated
<b>Modification</b>	Unmodified
<b>Isotype</b>	Mouse IgG1
<b>Clonality</b>	Monoclonal
<b>Form</b>	Liquid
<b>Concentration</b>	1mg/ml
<b>Storage</b>	Aliquot and store at -20°C (valid for 12 months). Avoid freeze/thaw cycles.
<b>Shipping</b>	Ice bags
<b>Buffer</b>	Purified antibody in PBS with 0.05% sodium azide
<b>Purification</b>	Affinity Purification

**Application**

<b>Dilution Ratio</b>	ELISA 1:5000-1:20000,FC 1:200-1:400
<b>Molecular Weight</b>	18.9kDa

**Antigen Information**

<b>Gene Name</b>	CD3D
<b>Alternative Names</b>	T3D; IMD19; CD3-DELTA
<b>Gene ID</b>	915.0
<b>SwissProt ID</b>	P04234
<b>Immunogen</b>	Purified recombinant fragment of human CD3D (AA: extra 22-105) expressed in E. Coli.

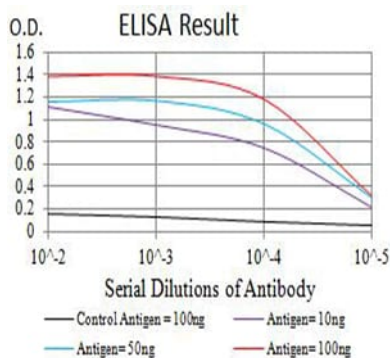
**Background**

The protein encoded by this gene is part of the T-cell receptor/CD3 complex (TCR/CD3 complex) and is involved in T-cell development and signal transduction. The encoded membrane protein represents the delta subunit of the CD3 complex, and along with four other CD3 subunits, binds either TCR alpha/beta or TCR gamma/delta to form the TCR/CD3 complex on the

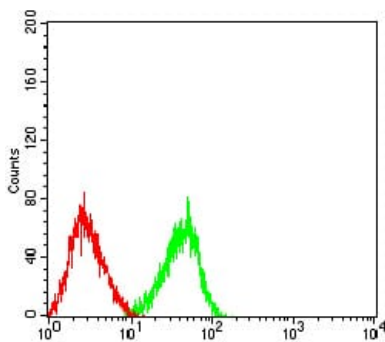
surface of T-cells. Defects in this gene are a cause of severe combined immunodeficiency autosomal recessive T-cell-negative/B-cell-positive/NK-cell-positive (SCIDBNK). Two transcript variants encoding different isoforms have been found for this gene. Other variants may also exist, but the full-length nature of their transcripts has yet to be defined.

## Research Area

### Image Data



Black line: Control Antigen (100 ng);Purple line: Antigen (10ng); Blue line: Antigen (50 ng); Red line:Antigen (100 ng)



Flow cytometric analysis of HL-60 cells using CD3D mouse mAb (green) and negative control (red).