
Product Name: CD66A Mouse Monoclonal Antibody**Catalog #: AMM82055**

For research use only.

Summary

Description	Mouse monoclonal Antibody
Host	Mouse
Application	WB,IHC,ELISA,FC
Reactivity	Human
Conjugation	Unconjugated
Modification	Unmodified
Isotype	Mouse IgG2b
Clonality	Monoclonal
Form	Liquid
Concentration	1mg/ml
Storage	Aliquot and store at -20°C (valid for 12 months). Avoid freeze/thaw cycles.
Shipping	Ice bags
Buffer	Purified antibody in PBS with 0.05% sodium azide
Purification	Affinity Purification

Application

Dilution Ratio	WB 1:500-1:2000,IHC 1:200-1:1000,ELISA 1:5000-1:20000,FC 1:200-1:400
Molecular Weight	57.6kDa

Antigen Information

Gene Name	CD66A
Alternative Names	CEACAM1; BGP; BGP1; BGPI
Gene ID	634.0
SwissProt ID	P13688
Immunogen	Purified recombinant fragment of human CD66A (AA: extra 65-201) expressed in E. Coli.

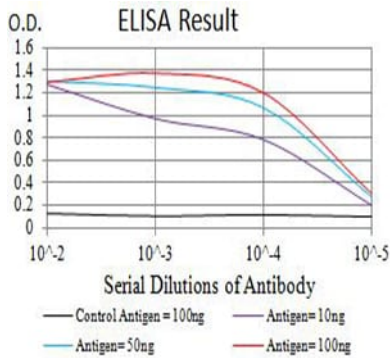
Background

This gene encodes a member of the carcinoembryonic antigen (CEA) gene family, which belongs to the immunoglobulin superfamily. Two subgroups of the CEA family, the CEA cell adhesion molecules and the pregnancy-specific glycoproteins, are located within a 1.2 Mb cluster on the long arm of chromosome 19. Eleven pseudogenes of the CEA cell adhesion molecule

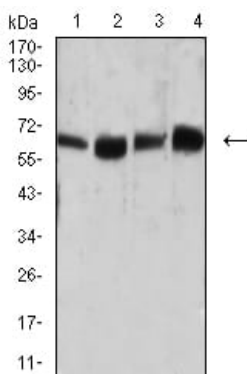
subgroup are also found in the cluster. The encoded protein was originally described in bile ducts of liver as biliary glycoprotein. Subsequently, it was found to be a cell-cell adhesion molecule detected on leukocytes, epithelia, and endothelia. The encoded protein mediates cell adhesion via homophilic as well as heterophilic binding to other proteins of the subgroup. Multiple cellular activities have been attributed to the encoded protein, including roles in the differentiation and arrangement of tissue three-dimensional structure, angiogenesis, apoptosis, tumor suppression, metastasis, and the modulation of innate and adaptive immune responses. Multiple transcript variants encoding different isoforms have been reported, but the full-length nature of all variants has not been defined.

Research Area

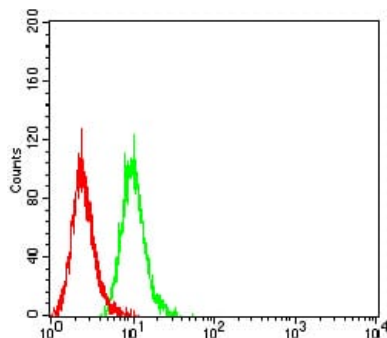
Image Data



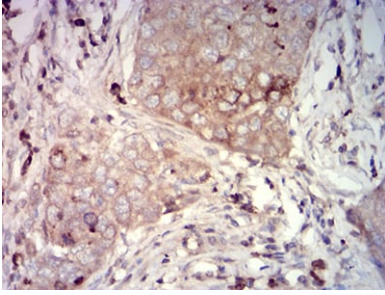
Black line: Control Antigen (100 ng);Purple line: Antigen (10ng); Blue line: Antigen (50 ng); Red line:Antigen (100 ng)



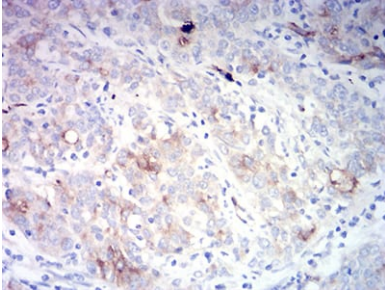
Western blot analysis using CD66A mouse mAb against HepG2 (1), SK-MES-1 (2), HeLa (3), and A549 (4) cell lysate.



Flow cytometric analysis of HeLa cells using CD66A mouse mAb (green) and negative control (red).



Immunohistochemical analysis of paraffin-embedded human lung cancer tissues using CD66A mouse mAb with DAB staining.



Immunohistochemical analysis of paraffin-embedded human cervical cancer tissues using CD66A mouse mAb with DAB staining.