

---

**Product Name: PD1 Mouse Monoclonal Antibody****Catalog #: AMM82044**

For research use only.

**Summary**

<b>Description</b>	Mouse monoclonal Antibody
<b>Host</b>	Mouse
<b>Application</b>	WB,ELISA,FC
<b>Reactivity</b>	Human
<b>Conjugation</b>	Unconjugated
<b>Modification</b>	Unmodified
<b>Isotype</b>	Mouse IgG1
<b>Clonality</b>	Monoclonal
<b>Form</b>	Liquid
<b>Concentration</b>	1mg/ml
<b>Storage</b>	Aliquot and store at -20°C (valid for 12 months). Avoid freeze/thaw cycles.
<b>Shipping</b>	Ice bags
<b>Buffer</b>	Purified antibody in PBS with 0.05% sodium azide
<b>Purification</b>	Affinity Purification

**Application**

<b>Dilution Ratio</b>	WB 1:500-1:2000,ELISA 1:5000-1:20000,FC 1:200-1:400
<b>Molecular Weight</b>	31.6KD

**Antigen Information**

<b>Gene Name</b>	PD1
<b>Alternative Names</b>	PDCD1; PD-1; CD279; SLEB2; hPD-1; hPD-I; hSLE1
<b>Gene ID</b>	5133.0
<b>SwissProt ID</b>	Q15116
<b>Immunogen</b>	Purified recombinant fragment of human PD1 (AA: extra 21-170) expressed in HEK293 cells.

**Background**

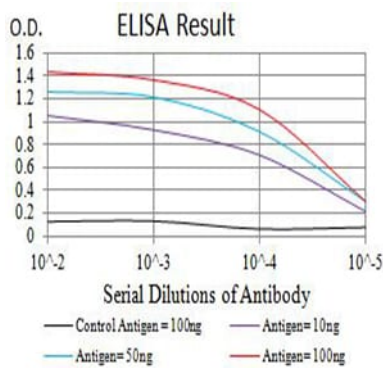
This gene encodes a cell surface membrane protein of the immunoglobulin superfamily. This protein is expressed in pro-B-cells and is thought to play a role in their differentiation. In mice, expression of this gene is induced in the thymus when anti-CD3 antibodies are injected and large numbers of thymocytes undergo apoptosis. Mice deficient for this gene bred on a BALB/c

background developed dilated cardiomyopathy and died from congestive heart failure. These studies suggest that this gene product may also be important in T cell function and contribute to the prevention of autoimmune diseases.

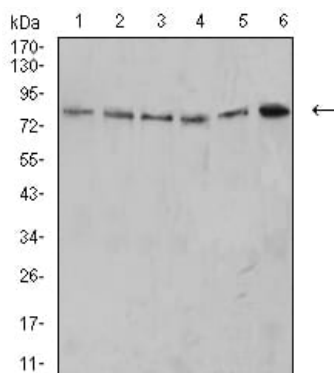
## Research Area

Apoptosis

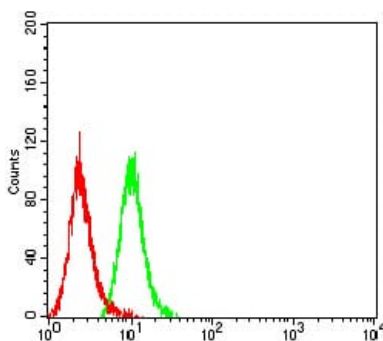
## Image Data



Black line: Control Antigen (100 ng);Purple line: Antigen (10ng); Blue line: Antigen (50 ng); Red line:Antigen (100 ng)



Western blot analysis using PD1 mouse mAb against MOLT4 (1), K562 (2), Ramos (3), HL-60 (4), THP-1 (5), and U937 (6) cell lysate.



Flow cytometric analysis of Hela cells using PD1 mouse mAb (green) and negative control (red).