

**Product Name: CD268 Mouse Monoclonal Antibody****Catalog #: AMM82037**

For research use only.

**Summary**

<b>Description</b>	Mouse monoclonal Antibody
<b>Host</b>	Mouse
<b>Application</b>	WB,ELISA,FC
<b>Reactivity</b>	Human,Rat
<b>Conjugation</b>	Unconjugated
<b>Modification</b>	Unmodified
<b>Isotype</b>	Mouse IgG2b
<b>Clonality</b>	Monoclonal
<b>Form</b>	Liquid
<b>Concentration</b>	1mg/ml
<b>Storage</b>	Aliquot and store at -20°C (valid for 12 months). Avoid freeze/thaw cycles.
<b>Shipping</b>	Ice bags
<b>Buffer</b>	Purified antibody in PBS with 0.05% sodium azide
<b>Purification</b>	Affinity Purification

**Application**

<b>Dilution Ratio</b>	WB 1:500-1:2000,ELISA 1:5000-1:20000,FC 1:200-1:400
<b>Molecular Weight</b>	18.9kDa

**Antigen Information**

<b>Gene Name</b>	CD268
<b>Alternative Names</b>	TNFRSF13C; BAFFR; CVID4; BAFF-R; BROMIX; prolixin
<b>Gene ID</b>	115650.0
<b>SwissProt ID</b>	Q96RJ3
<b>Immunogen</b>	Purified recombinant fragment of human CD268 (AA: extra 1-78) expressed in E. Coli.

**Background**

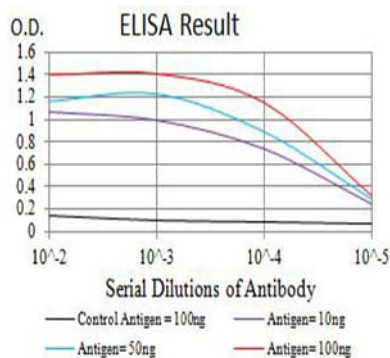
B cell-activating factor (BAFF) enhances B-cell survival in vitro and is a regulator of the peripheral B-cell population. Overexpression of Baff in mice results in mature B-cell hyperplasia and symptoms of systemic lupus erythematosus (SLE). Also, some SLE patients have increased levels of BAFF in serum. Therefore, it has been proposed that abnormally high levels of BAFF

may contribute to the pathogenesis of autoimmune diseases by enhancing the survival of autoreactive B cells. The protein encoded by this gene is a receptor for BAFF and is a type III transmembrane protein containing a single extracellular cysteine-rich domain. It is thought that this receptor is the principal receptor required for BAFF-mediated mature B-cell survival.

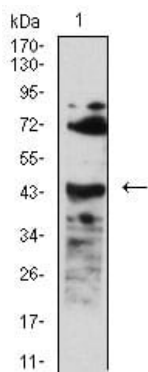
## Research Area

TGF-beta signaling pathway

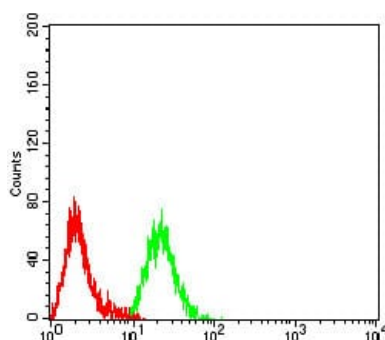
## Image Data



Black line: Control Antigen (100 ng);Purple line: Antigen (10ng); Blue line: Antigen (50 ng); Red line:Antigen (100 ng)



Western blot analysis using CD268 mouse mAb against C6 (1) cell lysate.



Flow cytometric analysis of Raji cells using CD268 mouse mAb (green) and negative control (red).