

**Product Name: BAG1 Mouse Monoclonal Antibody****Catalog #: AMM82022**

For research use only.

**Summary**

<b>Description</b>	Mouse monoclonal Antibody
<b>Host</b>	Mouse
<b>Application</b>	ICC,ELISA,FC
<b>Reactivity</b>	Human
<b>Conjugation</b>	Unconjugated
<b>Modification</b>	Unmodified
<b>Isotype</b>	Mouse IgG1
<b>Clonality</b>	Monoclonal
<b>Form</b>	Liquid
<b>Concentration</b>	1mg/ml
<b>Storage</b>	Aliquot and store at -20°C (valid for 12 months). Avoid freeze/thaw cycles.
<b>Shipping</b>	Ice bags
<b>Buffer</b>	Purified antibody in PBS with 0.05% sodium azide
<b>Purification</b>	Affinity Purification

**Application**

<b>Dilution Ratio</b>	ICC 1:100-1:500,ELISA 1:5000-1:20000,FC 1:200-1:400
<b>Molecular Weight</b>	38.8kDa

**Antigen Information**

<b>Gene Name</b>	BAG1
<b>Alternative Names</b>	HAP; BAG-1; RAP46
<b>Gene ID</b>	573.0
<b>SwissProt ID</b>	Q99933
<b>Immunogen</b>	Purified recombinant fragment of human BAG1 (AA: 219-346) expressed in E. Coli.

**Background**

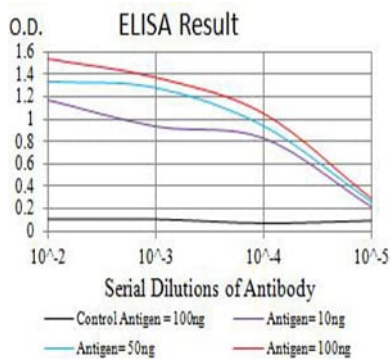
The oncogene BCL2 is a membrane protein that blocks a step in a pathway leading to apoptosis or programmed cell death. The protein encoded by this gene binds to BCL2 and is referred to as BCL2-associated athanogene. It enhances the anti-apoptotic effects of BCL2 and represents a link between growth factor receptors and anti-apoptotic mechanisms. Multiple protein

isoforms are encoded by this mRNA through the use of a non-AUG (CUG) initiation codon, and three alternative downstream AUG initiation codons. A related pseudogene has been defined on chromosome X.

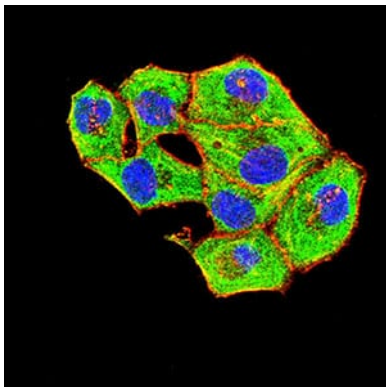
## Research Area

Apoptosis

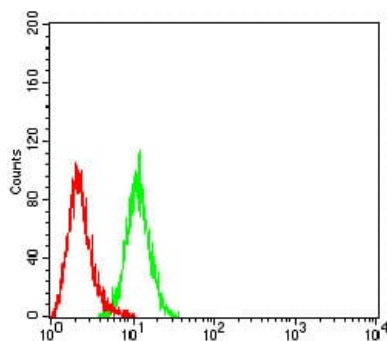
## Image Data



Black line: Control Antigen (100 ng);Purple line: Antigen (10ng); Blue line: Antigen (50 ng); Red line:Antigen (100 ng)



Immunofluorescence analysis of HeLa cells using BAG1 mouse mAb (green). Blue: DRAQ5 fluorescent DNA dye. Red: Actin filaments have been labeled with Alexa Fluor- 555 phalloidin.



Flow cytometric analysis of HeLa cells using BAG1 mouse mAb (green) and negative control (red).