

**Product Name: CD172A Mouse Monoclonal Antibody****Catalog #: AMM81999**

For research use only.

**Summary**

<b>Description</b>	Mouse monoclonal Antibody
<b>Host</b>	Mouse
<b>Application</b>	ELISA,FC
<b>Reactivity</b>	Human
<b>Conjugation</b>	Unconjugated
<b>Modification</b>	Unmodified
<b>Isotype</b>	Mouse IgG1
<b>Clonality</b>	Monoclonal
<b>Form</b>	Liquid
<b>Concentration</b>	1mg/ml
<b>Storage</b>	Aliquot and store at -20°C (valid for 12 months). Avoid freeze/thaw cycles.
<b>Shipping</b>	Ice bags
<b>Buffer</b>	Purified antibody in PBS with 0.05% sodium azide
<b>Purification</b>	Affinity Purification

**Application**

<b>Dilution Ratio</b>	ELISA 1:5000-1:20000,FC 1:200-1:400
<b>Molecular Weight</b>	55kDa

**Antigen Information**

<b>Gene Name</b>	CD172A
<b>Alternative Names</b>	BIT; MFR; P84; SIRP; MYD-1; SHPS1; SIRPA; PTPNS1
<b>Gene ID</b>	140885.0
<b>SwissProt ID</b>	P78324
<b>Immunogen</b>	Purified recombinant fragment of human CD172A (AA: extra 235-373) expressed in E. Coli.

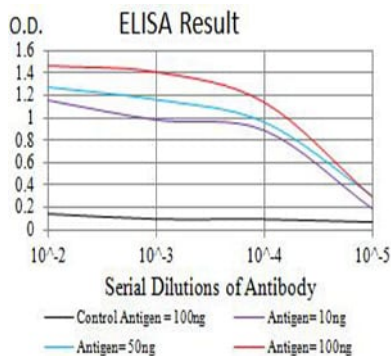
**Background**

The protein encoded by this gene is a member of the signal-regulatory-protein (SIRP) family, and also belongs to the immunoglobulin superfamily. SIRP family members are receptor-type transmembrane glycoproteins known to be involved in the negative regulation of receptor tyrosine kinase-coupled signaling processes. This protein can be phosphorylated by

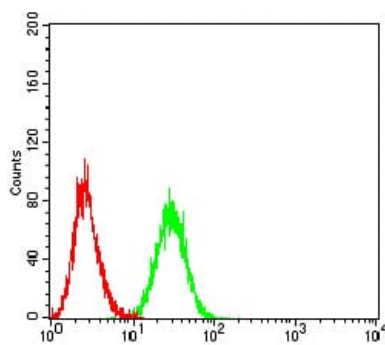
tyrosine kinases. The phospho-tyrosine residues of this PTP have been shown to recruit SH2 domain containing tyrosine phosphatases (PTP), and serve as substrates of PTPs. This protein was found to participate in signal transduction mediated by various growth factor receptors. CD47 has been demonstrated to be a ligand for this receptor protein. This gene and its product share very high similarity with several other members of the SIRP family. These related genes are located in close proximity to each other on chromosome 20p13. Multiple alternatively spliced transcript variants have been determined for this gene.

## Research Area

## Image Data



Black line: Control Antigen (100 ng);Purple line: Antigen (10ng); Blue line: Antigen (50 ng); Red line:Antigen (100 ng)



Flow cytometric analysis of Ramos cells using CD172A mouse mAb (green) and negative control (red).