

**Product Name: CD152 Mouse Monoclonal Antibody****Catalog #: AMM81979**

For research use only.

**Summary**

<b>Description</b>	Mouse monoclonal Antibody
<b>Host</b>	Mouse
<b>Application</b>	ELISA,FC
<b>Reactivity</b>	Human
<b>Conjugation</b>	Unconjugated
<b>Modification</b>	Unmodified
<b>Isotype</b>	Mouse IgG1
<b>Clonality</b>	Monoclonal
<b>Form</b>	Liquid
<b>Concentration</b>	1mg/ml
<b>Storage</b>	Aliquot and store at -20°C (valid for 12 months). Avoid freeze/thaw cycles.
<b>Shipping</b>	Ice bags
<b>Buffer</b>	Purified antibody in PBS with 0.05% sodium azide
<b>Purification</b>	Affinity Purification

**Application**

<b>Dilution Ratio</b>	ELISA 1:5000-1:20000,FC 1:200-1:400
<b>Molecular Weight</b>	24.6kDa

**Antigen Information**

<b>Gene Name</b>	CD152
<b>Alternative Names</b>	CTLA4; CD; GSE; GRD4; ALPS5; CTLA-4; IDDM12; CELIAC3
<b>Gene ID</b>	1493.0
<b>SwissProt ID</b>	P16410
<b>Immunogen</b>	Purified recombinant fragment of human CD152 (AA: extra 36-161) expressed in E. Coli.

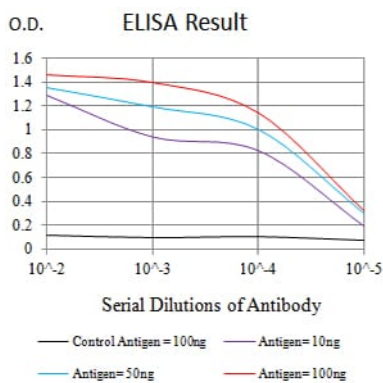
**Background**

This gene is a member of the immunoglobulin superfamily and encodes a protein which transmits an inhibitory signal to T cells. The protein contains a V domain, a transmembrane domain, and a cytoplasmic tail. Alternate transcriptional splice variants, encoding different isoforms, have been characterized. The membrane-bound isoform functions as a homodimer

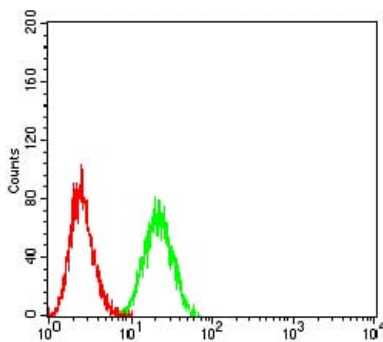
interconnected by a disulfide bond, while the soluble isoform functions as a monomer. Mutations in this gene have been associated with insulin-dependent diabetes mellitus, Graves disease, Hashimoto thyroiditis, celiac disease, systemic lupus erythematosus, thyroid-associated orbitopathy, and other autoimmune diseases.

## Research Area

## Image Data



Black line: Control Antigen (100 ng);Purple line: Antigen (10ng); Blue line: Antigen (50 ng); Red line:Antigen (100 ng)



Flow cytometric analysis of Ramos cells using CD152 mouse mAb (green) and negative control (red).