
Product Name: CD166 Mouse Monoclonal Antibody**Catalog #: AMM81971**

For research use only.

Summary

Description	Mouse monoclonal Antibody
Host	Mouse
Application	WB,IHC,ELISA,FC
Reactivity	Human
Conjugation	Unconjugated
Modification	Unmodified
Isotype	Mouse IgG1
Clonality	Monoclonal
Form	Liquid
Concentration	1mg/ml
Storage	Aliquot and store at -20°C (valid for 12 months). Avoid freeze/thaw cycles.
Shipping	Ice bags
Buffer	Purified antibody in PBS with 0.05% sodium azide
Purification	Affinity Purification

Application

Dilution Ratio	WB 1:500-1:2000,IHC 1:200-1:1000,ELISA 1:5000-1:20000,FC 1:200-1:400
Molecular Weight	65kDa

Antigen Information

Gene Name	CD166
Alternative Names	MEMD; ALCAM
Gene ID	214.0
SwissProt ID	Q13740
Immunogen	Purified recombinant fragment of human CD166 (AA: extra 227-381) expressed in E. Coli.

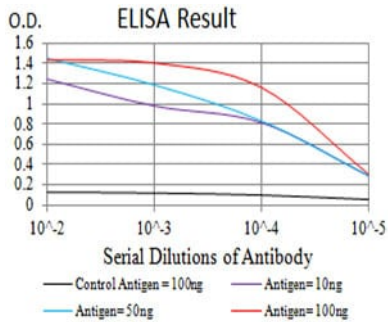
Background

This gene encodes activated leukocyte cell adhesion molecule (ALCAM), also known as CD166 (cluster of differentiation 166), which is a member of a subfamily of immunoglobulin receptors with five immunoglobulin-like domains (VVC2C2C2) in the extracellular domain. This protein binds to T-cell differentiation antigens CD6, and is implicated in the processes of cell

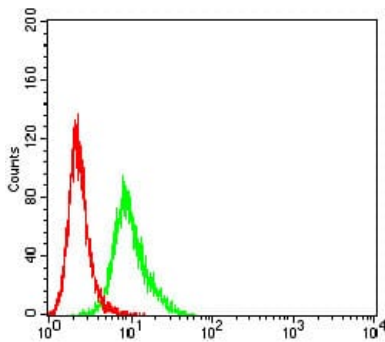
adhesion and migration. Multiple alternatively spliced transcript variants encoding different isoforms have been found.

Research Area

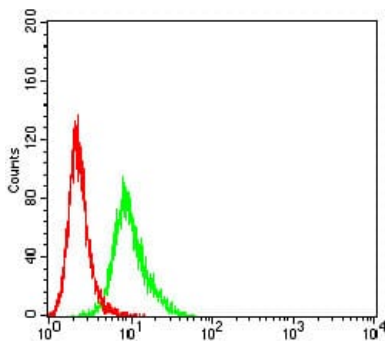
Image Data



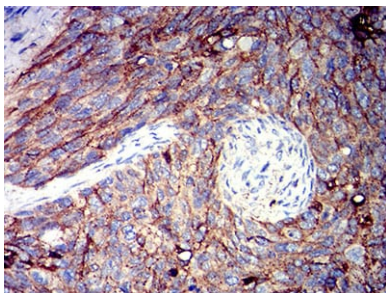
Black line: Control Antigen (100 ng);Purple line: Antigen (10ng); Blue line: Antigen (50 ng); Red line:Antigen (100 ng)



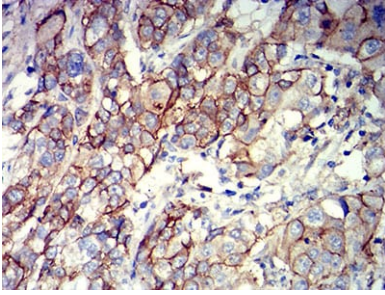
Flow cytometric analysis of HL-60 cells using CD166 mouse mAb (green) and negative control (red).



Flow cytometric analysis of K562 cells using CD166 mouse mAb (green) and negative control (red).



Immunohistochemical analysis of paraffin-embedded human cervical cancer tissues using CD166 mouse mAb with DAB staining.



Immunohistochemical analysis of paraffin-embedded human bladder cancer tissues using CD166 mouse mAb with DAB staining.