
Product Name: P2RY1 Mouse Monoclonal Antibody**Catalog #: AMM81949**

For research use only.

Summary

Description	Mouse monoclonal Antibody
Host	Mouse
Application	IHC,ELISA,FC
Reactivity	Human
Conjugation	Unconjugated
Modification	Unmodified
Isotype	Mouse IgG2b
Clonality	Monoclonal
Form	Liquid
Concentration	1mg/ml
Storage	Aliquot and store at -20°C (valid for 12 months). Avoid freeze/thaw cycles.
Shipping	Ice bags
Buffer	Purified antibody in PBS with 0.05% sodium azide
Purification	Affinity Purification

Application

Dilution Ratio	IHC 1:200-1:1000,ELISA 1:5000-1:20000,FC 1:200-1:400
Molecular Weight	42kDa

Antigen Information

Gene Name	P2RY1
Alternative Names	P2Y1
Gene ID	5028.0
SwissProt ID	P47900
Immunogen	Purified recombinant fragment of human P2RY1 (AA: extra mix) expressed in E. Coli.

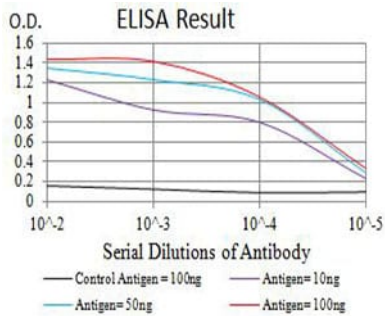
Background

The product of this gene belongs to the family of G-protein coupled receptors. This family has several receptor subtypes with different pharmacological selectivity, which overlaps in some cases, for various adenosine and uridine nucleotides. This receptor functions as a receptor for extracellular ATP and ADP. In platelets binding to ADP leads to mobilization of intracellular

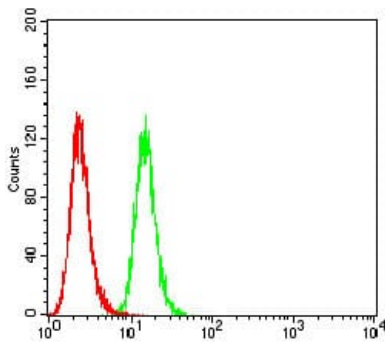
calcium ions via activation of phospholipase C, a change in platelet shape, and probably to platelet aggregation.

Research Area

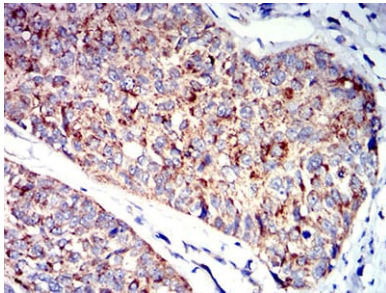
Image Data



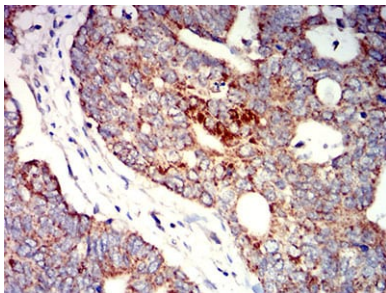
Black line: Control Antigen (100 ng); Purple line: Antigen (10ng); Blue line: Antigen (50 ng); Red line: Antigen (100 ng)



Flow cytometric analysis of Hela cells using P2RY1 mouse mAb (green) and negative control (red).



Immunohistochemical analysis of paraffin-embedded human bladder cancer tissues using P2RY1 mouse mAb with DAB staining.



Immunohistochemical analysis of paraffin-embedded human rectum cancer tissues using P2RY1 mouse mAb with DAB staining.