

---

**Product Name: BCL6 Mouse Monoclonal Antibody****Catalog #: AMM81947**

For research use only.

**Summary**

<b>Description</b>	Mouse monoclonal Antibody
<b>Host</b>	Mouse
<b>Application</b>	ICC,ELISA,FC
<b>Reactivity</b>	Human
<b>Conjugation</b>	Unconjugated
<b>Modification</b>	Unmodified
<b>Isotype</b>	Mouse IgG1
<b>Clonality</b>	Monoclonal
<b>Form</b>	Liquid
<b>Concentration</b>	1mg/ml
<b>Storage</b>	Aliquot and store at -20°C (valid for 12 months). Avoid freeze/thaw cycles.
<b>Shipping</b>	Ice bags
<b>Buffer</b>	Purified antibody in PBS with 0.05% sodium azide
<b>Purification</b>	Affinity Purification

**Application**

<b>Dilution Ratio</b>	ICC 1:200-1:1000,ELISA 1:5000-1:20000,FC 1:200-1:400
<b>Molecular Weight</b>	78.8kDa

**Antigen Information**

<b>Gene Name</b>	BCL6
<b>Alternative Names</b>	BCL5; LAZ3; BCL6A; ZNF51; ZBTB27
<b>Gene ID</b>	604.0
<b>SwissProt ID</b>	P41182
<b>Immunogen</b>	Purified recombinant fragment of human BCL6 (AA: 147-276) expressed in E. Coli.

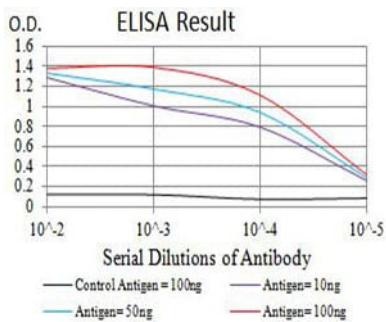
**Background**

The protein encoded by this gene is a zinc finger transcription factor and contains an N-terminal POZ domain. This protein acts as a sequence-specific repressor of transcription, and has been shown to modulate the transcription of STAT-dependent IL-4 responses of B cells. This protein can interact with a variety of POZ-containing proteins that function as transcription

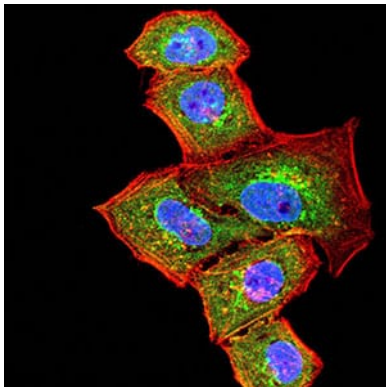
corepressors. This gene is found to be frequently translocated and hypermutated in diffuse large-cell lymphoma (DLCL), and may be involved in the pathogenesis of DLCL. Alternatively spliced transcript variants encoding different protein isoforms have been found for this gene.

## Research Area

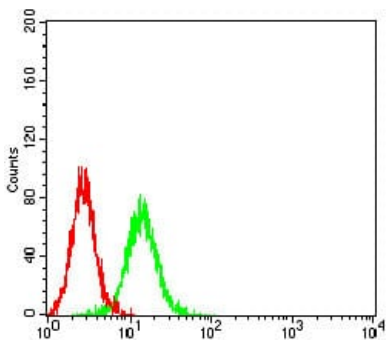
## Image Data



Black line: Control Antigen (100 ng);Purple line: Antigen (10ng); Blue line: Antigen (50 ng); Red line:Antigen (100 ng)



Immunofluorescence analysis of HeLa cells using BCL6 mouse mAb (green). Blue: DRAQ5 fluorescent DNA dye. Red: Actin filaments have been labeled with Alexa Fluor- 555 phalloidin.



Flow cytometric analysis of K562 cells using BCL6 mouse mAb (green) and negative control (red).