

**Product Name: CD100 Mouse Monoclonal Antibody****Catalog #: AMM81946**

For research use only.

**Summary**

<b>Description</b>	Mouse monoclonal Antibody
<b>Host</b>	Mouse
<b>Application</b>	IHC,ELISA,FC
<b>Reactivity</b>	Human
<b>Conjugation</b>	Unconjugated
<b>Modification</b>	Unmodified
<b>Isotype</b>	Mouse IgG1
<b>Clonality</b>	Monoclonal
<b>Form</b>	Liquid
<b>Concentration</b>	1mg/ml
<b>Storage</b>	Aliquot and store at -20°C (valid for 12 months). Avoid freeze/thaw cycles.
<b>Shipping</b>	Ice bags
<b>Buffer</b>	Purified antibody in PBS with 0.05% sodium azide
<b>Purification</b>	Affinity Purification

**Application**

<b>Dilution Ratio</b>	IHC 1:200-1:1000,ELISA 1:5000-1:20000,FC 1:200-1:400
<b>Molecular Weight</b>	96.2kDa

**Antigen Information**

<b>Gene Name</b>	CD100
<b>Alternative Names</b>	SEMA4D; SEMAJ; coll-4; C9orf164; M-sema-G
<b>Gene ID</b>	10507.0
<b>SwissProt ID</b>	Q92854
<b>Immunogen</b>	Purified recombinant fragment of human CD100 (AA: extra 590-734) expressed in E. Coli.

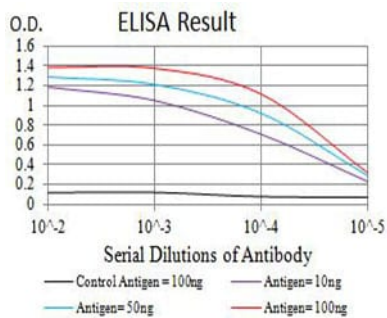
**Background**

SEMA4D (Semaphorin 4D) is a Protein Coding gene. Diseases associated with SEMA4D include Hemorrhagic Fever With Renal Syndrome. Among its related pathways are Guidance Cues and Growth Cone Motility and Developmental Biology. GO annotations related to this gene include receptor binding and transmembrane signaling receptor activity. An important paralog

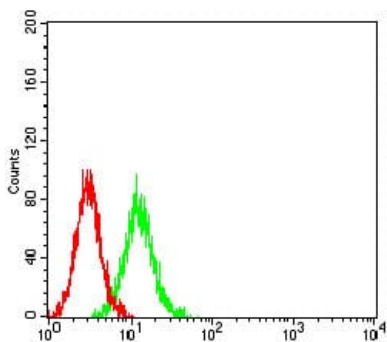
of this gene is SEMA4B.

## Research Area

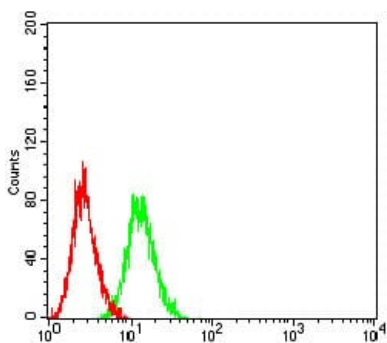
## Image Data



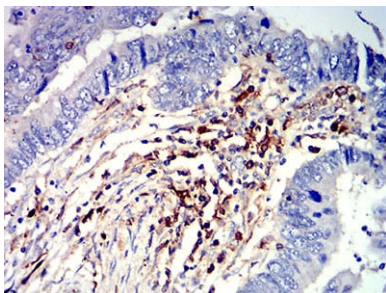
Black line: Control Antigen (100 ng);Purple line: Antigen (10ng); Blue line: Antigen (50 ng); Red line:Antigen (100 ng)



Flow cytometric analysis of K562 cells using CD100 mouse mAb (green) and negative control (red).



Flow cytometric analysis of Ramos cells using CD100 mouse mAb (green) and negative control (red).



Immunohistochemical analysis of paraffin-embedded human rectum cancer tissues using CD100 mouse mAb with DAB staining.