

**Product Name: ADAP1 Mouse Monoclonal Antibody****Catalog #: AMM81936**

For research use only.

**Summary**

<b>Description</b>	Mouse monoclonal Antibody
<b>Host</b>	Mouse
<b>Application</b>	WB,ELISA,FC
<b>Reactivity</b>	Human,Rat
<b>Conjugation</b>	Unconjugated
<b>Modification</b>	Unmodified
<b>Isotype</b>	Mouse IgG1
<b>Clonality</b>	Monoclonal
<b>Form</b>	Liquid
<b>Concentration</b>	1mg/ml
<b>Storage</b>	Aliquot and store at -20°C (valid for 12 months). Avoid freeze/thaw cycles.
<b>Shipping</b>	Ice bags
<b>Buffer</b>	Purified antibody in PBS with 0.05% sodium azide
<b>Purification</b>	Affinity Purification

**Application**

<b>Dilution Ratio</b>	WB 1:500-1:2000,ELISA 1:5000-1:20000,FC 1:200-1:400
<b>Molecular Weight</b>	43.4kDa

**Antigen Information**

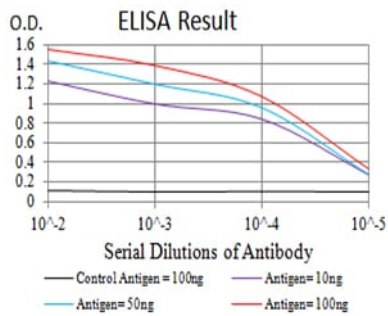
<b>Gene Name</b>	ADAP1
<b>Alternative Names</b>	GCS1L; CENTA1; P42ip4
<b>Gene ID</b>	11033.0
<b>SwissProt ID</b>	O75689
<b>Immunogen</b>	Purified recombinant fragment of human ADAP1 (AA: 240-370) expressed in E. Coli.

**Background**

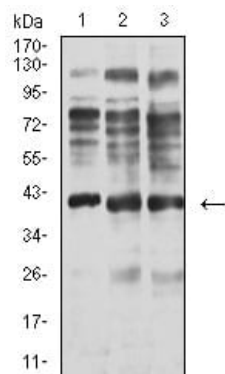
ADAP1 (ArfGAP With Dual PH Domains 1) is a Protein Coding gene. Among its related pathways are Class I PI3K signaling events and B Cell Receptor Signaling Pathway (sino). GO annotations related to this gene include GTPase activator activity and inositol 1,3,4,5 tetrakisphosphate binding. An important paralog of this gene is ADAP2.

## Research Area

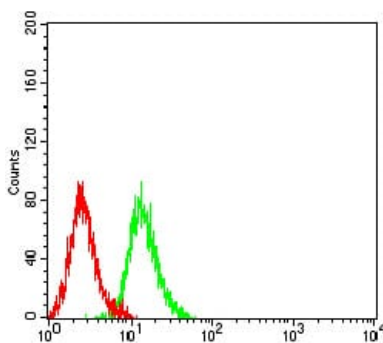
## Image Data



Black line: Control Antigen (100 ng); Purple line: Antigen (10ng); Blue line: Antigen (50 ng); Red line: Antigen (100 ng)



Western blot analysis using ADAP1 mouse mAb against C6 (1), A549 (2), and HepG2 (3) cell lysate.



Flow cytometric analysis of K562 cells using ADAP1 mouse mAb (green) and negative control (red).