

**Product Name: CHRNA10 Mouse Monoclonal Antibody****Catalog #: AMM81925**

For research use only.

**Summary**

<b>Description</b>	Mouse monoclonal Antibody
<b>Host</b>	Mouse
<b>Application</b>	ELISA,FC
<b>Reactivity</b>	Human
<b>Conjugation</b>	Unconjugated
<b>Modification</b>	Unmodified
<b>Isotype</b>	Mouse IgG1
<b>Clonality</b>	Monoclonal
<b>Form</b>	Liquid
<b>Concentration</b>	1mg/ml
<b>Storage</b>	Aliquot and store at -20°C (valid for 12 months). Avoid freeze/thaw cycles.
<b>Shipping</b>	Ice bags
<b>Buffer</b>	Purified antibody in PBS with 0.05% sodium azide
<b>Purification</b>	Affinity Purification

**Application**

<b>Dilution Ratio</b>	ELISA 1:5000-1:20000,FC 1:200-1:400
<b>Molecular Weight</b>	49.7kDa

**Antigen Information**

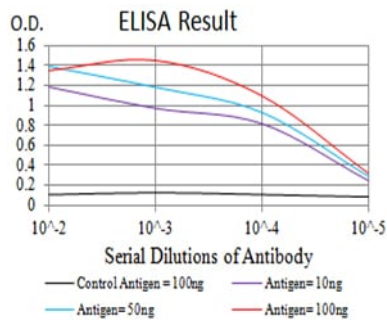
<b>Gene Name</b>	CHRNA10
<b>Alternative Names</b>	CHRNA10
<b>Gene ID</b>	57053.0
<b>SwissProt ID</b>	Q9GZZ6
<b>Immunogen</b>	Purified recombinant fragment of human CHRNA10 (AA: extra 25-237) expressed in E. Coli.

**Background**

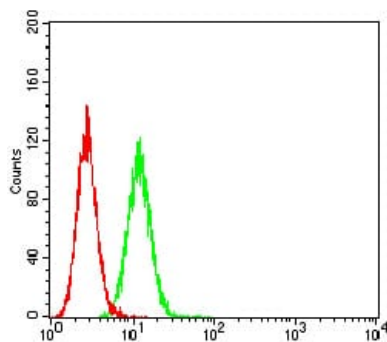
CHRNA10 (Cholinergic Receptor Nicotinic Alpha 10 Subunit) is a Protein Coding gene. Among its related pathways are Peptide ligand-binding receptors and CREB Pathway. GO annotations related to this gene include receptor binding and extracellular ligand-gated ion channel activity. An important paralog of this gene is CHRNA9.

## Research Area

## Image Data



Black line: Control Antigen (100 ng);Purple line: Antigen (10ng); Blue line: Antigen (50 ng); Red line:Antigen (100 ng)



Flow cytometric analysis of HeLa cells using CHRNA10 mouse mAb (green) and negative control (red).