

**Product Name: ANAPC1 Mouse Monoclonal Antibody****Catalog #: AMM81918**

For research use only.

**Summary**

<b>Description</b>	Mouse monoclonal Antibody
<b>Host</b>	Mouse
<b>Application</b>	ICC,ELISA,FC
<b>Reactivity</b>	Human
<b>Conjugation</b>	Unconjugated
<b>Modification</b>	Unmodified
<b>Isotype</b>	Mouse IgG1
<b>Clonality</b>	Monoclonal
<b>Form</b>	Liquid
<b>Concentration</b>	1mg/ml
<b>Storage</b>	Aliquot and store at -20°C (valid for 12 months). Avoid freeze/thaw cycles.
<b>Shipping</b>	Ice bags
<b>Buffer</b>	Purified antibody in PBS with 0.05% sodium azide
<b>Purification</b>	Affinity Purification

**Application**

<b>Dilution Ratio</b>	ICC 1:100-1:500,ELISA 1:5000-1:20000,FC 1:200-1:400
<b>Molecular Weight</b>	216kDa

**Antigen Information**

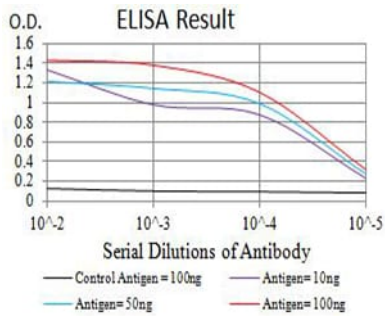
<b>Gene Name</b>	ANAPC1
<b>Alternative Names</b>	APC1; MCPR; TSG24
<b>Gene ID</b>	64682.0
<b>SwissProt ID</b>	Q9H1A4
<b>Immunogen</b>	Purified recombinant fragment of human ANAPC1 (AA: 12-155) expressed in E. Coli.

**Background**

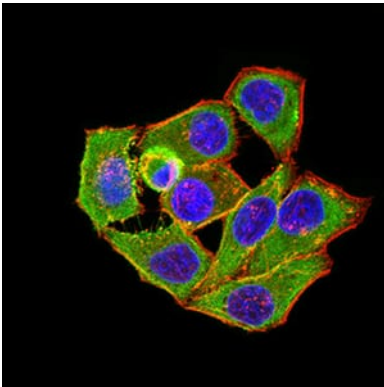
This gene encodes a subunit of the anaphase-promoting complex. This complex is an E3 ubiquitin ligase that regulates progression through the metaphase to anaphase portion of the cell cycle by ubiquitinating proteins which targets them for degradation.

## Research Area

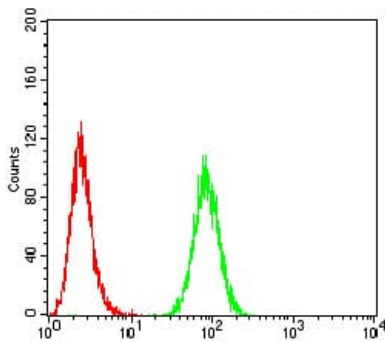
## Image Data



Black line: Control Antigen (100 ng); Purple line: Antigen (10ng); Blue line: Antigen (50 ng); Red line: Antigen (100 ng)



Immunofluorescence analysis of HeLa cells using ANAPC1 mouse mAb (green). Blue: DRAQ5 fluorescent DNA dye. Red: Actin filaments have been labeled with Alexa Fluor- 555 phalloidin.



Flow cytometric analysis of HeLa cells using ANAPC1 mouse mAb (green) and negative control (red).