

Product Name: BCL2L2 Mouse Monoclonal Antibody**Catalog #: AMM81911**

For research use only.

Summary

Description	Mouse monoclonal Antibody
Host	Mouse
Application	ELISA,FC
Reactivity	Human
Conjugation	Unconjugated
Modification	Unmodified
Isotype	Mouse IgG2a
Clonality	Monoclonal
Form	Liquid
Concentration	1mg/ml
Storage	Aliquot and store at -20°C (valid for 12 months). Avoid freeze/thaw cycles.
Shipping	Ice bags
Buffer	Purified antibody in PBS with 0.05% sodium azide
Purification	Affinity Purification

Application

Dilution Ratio	ELISA 1:5000-1:20000,FC 1:200-1:400
Molecular Weight	20.7kDa

Antigen Information

Gene Name	BCL2L2
Alternative Names	BCLW; BCL-W; PPP1R51; BCL2-L-2
Gene ID	599.0
SwissProt ID	Q92843
Immunogen	Purified recombinant fragment of human BCL2L2 (AA: 6-118) expressed in E. Coli.

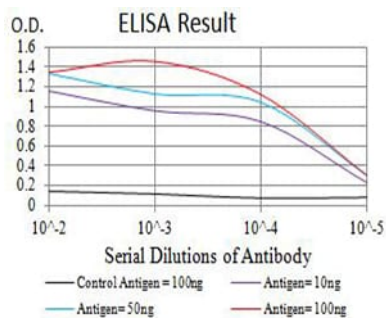
Background

This gene encodes a member of the BCL-2 protein family. The proteins of this family form hetero- or homodimers and act as anti- and pro-apoptotic regulators. Expression of this gene in cells has been shown to contribute to reduced cell apoptosis under cytotoxic conditions. Studies of the related gene in mice indicated a role in the survival of NGF- and BDNF-dependent

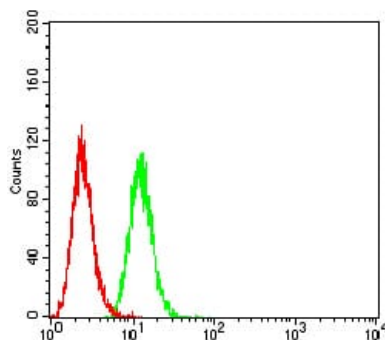
neurons. Mutation and knockout studies of the mouse gene demonstrated an essential role in adult spermatogenesis. Alternative splicing results in multiple transcript variants. Read-through transcription also exists between this gene and the neighboring downstream PABPN1 (poly(A) binding protein, nuclear 1) gene.

Research Area

Image Data



Black line: Control Antigen (100 ng); Purple line: Antigen (10ng); Blue line: Antigen (50 ng); Red line: Antigen (100 ng)



Flow cytometric analysis of Hela cells using BCL2L2 mouse mAb (green) and negative control (red).